

— *ANGLING AUCTIONS* —

SALE OF
FISHING TACKLE
and
RELATED ITEMS

on
SATURDAY, 6th April 2024
at 12 noon



TERMS AND CONDITIONS

A. BUYERS

1. The Auctioneers as agent

Unless otherwise stated, the Auctioneers act only as agent for the Vendor.

2. Buyer

- (a) The Buyer shall be the highest bidder acceptable to the Auctioneer and the Auctioneers shall have absolute discretion to settle any dispute.
- (b) The Auctioneer reserves the right to refuse to accept bids from any person or to refuse admission to the premises of sale without giving any reason thereof.

3. Buyers Premium

The Buyer shall pay the Auctioneer a premium of 18% of the Hammer Price (together with VAT at the standard rate thereon).

4. Payment

Payment on purchased Lots can be made by the following methods:-

- (a) Cash
- (b) Cheque supported by a bank or other suitable reference
- (c) Mastercard or Visa

5. Collection of Purchases

- (a) All purchased Lots are to be paid for in full and removed from the saleroom on the day of sale after which the Auctioneers reserve the right to remove any Lot(s) to store at the sole expense of the buyer and without notification, unless otherwise arranged with the Auctioneer prior to the sale.
- (b) Wherever possible goods will be made available for collection during the sale.

6. Responsibility for purchase Lots

- (a) Upon the fall of the Hammer all risk in the Lot sold will pass to the buyer and neither the Auctioneer nor Vendor shall be responsible for any loss or damage howsoever caused, but ownership of such Lot shall not pass until payment in respect thereof has been made in accordance with Condition A. 5(a).
- (b) In the event of a Buyer either failing to pay for or collect a Lot the Auctioneers reserve the right to exercise one or more of the following rights:-
 - (i) to issue proceedings against the Buyer for breach of contract
 - (ii) to rescind the sale of that and any other Lots(s) sold to the buyer
 - (iii) to resell the Lot(s) either by public or private sale.

Any deficiency in the Purchase Price resulting from the resale, together with full costs incurred shall be paid to the Auctioneers by the Buyer and any surplus over the Proceeds of Sale shall belong to the Vendor.

7. Catalogue Description

- (a) All Lots are offered for sale as shown and neither the Auctioneer nor Vendor accept any responsibility for imperfections, faults or errors of description, buyers should satisfy themselves as to the condition of any Lots prior to bidding.
- (b) Descriptions contained in the catalogue are the opinion of the Auctioneers and should not be taken as a representation of statement or fact. Some descriptions in the catalogue make reference to damage and/or restoration. Such information is given for guidance only and the absence of such a reference does not imply that a Lot is free from defects nor does any reference to particular defects imply the absence of others.

8. Value Added Tax

In the case of a lot marked with an asterisk (*) in the catalogue, VAT is payable on the Hammer Price. VAT is payable at the rates prevailing on the date of the auction.

9. Commission Bids

Absentee (Commission) bids will be executed as cheaply as any other bids or Vendors reserve allows and the Auctioneers accept no responsibility for the execution of Commission bids by any member of staff whatsoever.

B. VENDORS

1. Commission, Expenses & Reserves

- (a) Vendors commission is charged at the rate of 10% on all Lots selling for £10,000.00 or over and at the rate of 12.5% for Lots selling for under £10,000.00. The minimum charge for offering a Lot for sale is £10.00.
- (b) A handling fee of £1.00 per Lot will be charged on all Lots sold.
- (c) In respect of any unsold Lot the Auctioneer will charge 3% of the Vendors reserve or a minimum charge of £10.00 per Lot.
- (d) In the event an item is withdrawn from the auction at the instruction of the Vendor, for whatsoever reason a charge of £10.00 will be levied per item.
- (e) Lots may be offered subject to a reserve as agreed between the Auctioneer and vendor in writing and once agreed may only be changed with the consent of the Auctioneers.
- (f) The Vendor shall not bid on his own property nor employ any person to bid for him. The Auctioneer shall have the right to bid on behalf of the Vendor only up to the agreed reserve price.
- (g) Items failing to sell or withdrawn from sale at the instruction of the Vendor must be collected within three working days of the sale after which the Auctioneers reserve the right to send to storage any remaining goods at the sole expense of the Vendor and without notification.
- (h) V.A.T. Is chargeable at the standard rate on all of the Auctioneers charges.

(Continued on inside back cover)

ANGLING AUCTIONS

SALE OF

FISHING TACKLE

And

RELATED ITEMS

TO BE HELD ON-LINE

On

SATURDAY, 6th April 2024
at 12 noon

Viewing:

Monday 11th March - Thursday 4th April

At our offices and by appointment only

Tel: 01794 518076 (not sale day)

Mobile: 07785 281349

Email: neil@anglingauctions.com

www.angling-auctions.com

Angling Auctions
30 Basepoint, Premier Way
Abbey Park, Romsey
Hants, SO51 9AQ



IMPORTANT NOTICE

**THIS AUCTION WILL BE SOLD
ON-LINE ONLY AT:**

WWW.ANGLINGAUCTIONS.COM

**ITEMS CAN BE VIEWED AT OUR OFFICES
BY PRIOR ARRANGMENT FROM:**

Monday 11th March - Thursday 4th April

**TO MAKE AN APPOINTMENT TO VIEW
PLEASE CONTACT ME AT:**

email: neil@anglingauctions.com

Tel. 01794 518076

Mob. 07785 281349

**If you cannot view and require more images or
information please contact me for assistance.**

Neil Freeman – Angling Auctions

RODS, REELS & ACCESSORIES

1

A Hardy Brass Faced Perfect 4" salmon fly reel and block leather case, domed ivory handle, brass foot, strapped rim tension screw with Turk's head locking nut and early calliper spring check mechanism (spring repaired), solid drum (no perforations) with four rim cusps and milled nickel silver locking screw, faceplate stamped Rod in Hand trademark, open oval and straight line logos, wear from normal use, circa 1900 (see illustration)

£450-650



4

A Hardy brass 2 1/4" trout crank winch, tapered horn handle on waisted straight crank winding arm with domed iron retaining screw, bridge foot, triple cage pillars, fixed check mechanism, faceplate stamped Rod in Hand trademark and enclosed oval logo, light wear to bronze patina from normal use, circa 1895

£250-450

5

A scarce Hardy Brass Faced Perfect 4 1/2" salmon fly reel, domed ivory handle, pierced alloy foot, very slightly reduced at both ends, strapped rim tension screw with Turk's head locking nut and early calliper spring check mechanism, slightly dished drum with four rim cusps and milled nickel silver locking screw, faceplate stamped open oval and straight line logos, reel retains much of the original bronze and lead finish, circa 1898 (see illustration)

£450-650

2

A good Hardy Hercules 4 1/2" salmon fly reel, domed ivory handle on raised winding plate, pierced and waisted brass foot, quadruple cage pillars, fixed check mechanism, faceplate with raised two screw spindle boss, stamped enclosed oval logo, light wear to bronze patina from normal use, circa 1896

£200-300

3

A scarce Hardy Perfect 3 7/8" trout fly reel, ivory handle, pierced brass foot, strapped rim tension screw and early calliper spring check mechanism, contracted drum with four rim cusps, two incised concentric bands to outer edge and milled nickel silver locking screw, faceplate stamped Rod in Hand trademark and central circular logo, light wear to lead finish from normal use, circa 1898 (see illustration)

£300-400



6

A Pezon et Michel "Parabolic Saumon" 3 piece cane salmon fly rod, 12', green/scarlet tipped silk wraps, sliding alloy reel fitting, suction ferrules, light use only, in bag
£140-180

.....

7

A Hardy Perfect 3 3/8" trout fly reel, ivory handle, brass foot (filed), strapped rim tension screw, relocated to left hand conversion, 1906 calliper spring check mechanism, nickel silver drum locking screw, faceplate stamped circular logo, used condition and a Pezon et Michel "Parabolic Supreme Competition" 2 piece cane trout fly rod, 8', #5/6, green wraps, anodised screw grip reel fitting, tip ring broken off, in bag (2)
£130-180

.....

8

A Hardy Marquis No.2 salmon fly reel, ebonite handle, ribbed brass foot, two screw drum latch, rear tension adjuster, in zip case and a Hardy Graphite 3 piece salmon fly rod, 15'4", #10, in bag (2)
£100-150

.....

9

Two Brady leather trimmed canvas salmon fishing bags and a collection of various other tackle including a Hardy Marquis No.1 salmon reel, a Walker Bampton alloy trout fly reel, twelve various older carbon fly and spinning rods, various makers including Sage, Hardy, Bruce & Walker et al and various other items (Q)
£120-160

.....

10

A Hardy Perfect 4" salmon fly reel and spare spool, ebonite handle, ribbed brass foot (filed) milled rim tension screw and Mk.II check mechanism, nickel silver drum locking screw, wear to enamel finish from normal use, 1960's
£200-300

.....

11

An Allcock Aerial model 7950-T3 4" centre pin reel, caged and six spoked drum with twin (later) ivory handles, ventilated front flange and twin regulator/release forks,

B.P. line guide, brass stancheon foot, rear sliding brass optional check button and calliper spring check mechanism, backplate stamped circular trademark, circa 1915 (see illustration)
£300-400



12

A B. James "Avocet" 3 piece cane float rod, 11'3", crimson silk inter-whipped, sliding alloy reel fittings, "onion" cork handle, stand-off rings, suction joints, London transfer label, re-varnished at some time, in bag
£180-260

.....

13

A Chapman "Dennis Pye 700" 2 piece cane pike rod, 10', crimson silk wraps, detachable cork handle with sliding alloy reel fittings, suction joints, in bag
£120-160

.....

14

A Richard Carter Merlin 4" centre pin reel, black anodised finish, shallow cored drum with twin composition handles and ventilated front flange, alloy stancheon foot, rear sliding optional check button, bar spring check mechanism, made 1996, new/unused condition, in original card box
£250-450

.....

15

A scarce Dave Beale Twynham 4" centre pin reel, caged and six spoked drum with twin reverse tapered ivory handle, ventilated flanges and twin release/regulator forks, B.P. line guide, pierced brass stancheon foot, rim mounted optional check

lever with bar spring mechanism, backplate engraved model details and in original teak case with brass presentation plaque "Avon Roach Project, Annual Fundraising Event 2017, Donated by Ringwood Tackle", as new condition (see illustration)

£350-550



16

A rare early B. James pre-production "S/U Mk.IV" 2 piece cane carp rod, 10', green silk inter-whipped, trumpet cork handle with sliding alloy reel fittings, brass suction ferrule, with spigot male fitting, clear agate lined butt and tip rings, transfer Ealing label only (no model details as was typical on the later production models from circa 1955), a very rare example of a pre-production "Stepped Up" Mk.IV rod, made circa 1953/4, rod is in overall very good condition for its age and is in an un-named cloth bag which is contemporary to the rod, rare opportunity to acquire a unique piece of early carp fishing history

£500-800

17

A fine Richard Carter Avon Classic 4 1/2" narrow drummed centre pin reel, black anodised finish, caged and six spoked drum with twin composition handles, ventilated front flange, twin release regulator forks, ribbed brass stanchion foot with rear spear point starback, rim mounted optional check lever and bar spring check mechanism, rear plate interior engraved "No.6 May '93", unused condition, in original card box (see illustration)

£400-600



18

A Hardy "Perfection Roach" 2 piece cane float rod, 11', crimson silk inter-whipped, sliding alloy reel fittings, stand-off rings, suction joint, 1960, very good overall condition, in bag

£160-260

19

A scarce Richard Carter Firefly 3 3/8" trout fly reel, black anodised finish, shallow cored drum with counter-balanced composition handle and fork release lever, multi-perforated drum and backplate, pierced block foot engraved "No.14" and model details, rear tension adjuster, near new condition, made 1999, in card box

£250-450

20

A good Charlton 8450c Configurable trout/saltwater fly reel and spare spool, black anodised, left hand wind model, multi-perforated drum with counter-balanced rosewood handle, push button spindle release, block foot and rear star tension adjusting wheel, #5/6 shallow core and #7/8 narrow spindled spare spool, only light use (see illustration)

£600-900



21

A superb Thomas & Thomas "Paradigm" 2 piece (2 tips) flamed cane trout fly rod, 8', #5, light tan/crimson tipped silk wraps with dark brown/crimson tipped ferrule whippings, western profile cork handle with alloy screw grip reel fitting, stamped makers name, swollen butt section, blued nickel silver suction ferrules, full open bridge carbide butt ring, snake rings throughout and hayfork tip eyes, ink inscribed model details and No. 5670, rod is in unused condition and in original cloth bag and brass capped tube
£1000-1500

.....

22

A fine Thomas & Thomas "Classic" 2 piece (2 tips) impregnated cane brook trout fly rod, 7', #3, mid-tan silk wraps, dark brown/crimson banded ferrule whippings, cigar shaped cork handle with polished black walnut seat and sliding blued nickel silver fittings, butt cap stamped makers details, blued nickel silver ferrules, full open bridge carbide butt ring, snake rings throughout and hayfork tip eyes, ink inscribed model details and No. 5676, as new condition, in original cloth bag and brass capped alloy tube
£600-900

.....

23

A good Tibor Everglades bonefish reel, silver anodised finish, slotted core drum with counter-balanced composition handle, block foot and rear milled spindle tension adjuster, backplate engraved with presentation details of a bonefish and "Largest Bonefish 2013", new/unused condition, in original card box (see illustration)
£240-340



24

A Thomas & Thomas "Horizon" 4 piece carbon bonefish rod, 9', #8, blue silk wraps, anodised screw grip reel fitting, light use only, in bag (no tube)
£120-160

.....

25

A very rare Hardy Tournament Silex "L" series casting reel, the 3 1/4" alloy solid drummed reel with twin stud handles and additional turned ebonite extension handle for line retrieval, central knurled nickel silvered drum locking nut, pressed alloy foot stamped "H.4" and rear plate fitted four various cast and balance controls with adjustable wire reflex drum braking arm and additional manual brake lever with calibrated tension settings, the brake arm is secured by a milled locking disc and the reel is supplied with two inter-changeable brake arms, one straight the other set at 90° from the securing bracket, originally made with three tubular nickel silver drum pillars, the centre pillar has been removed at some time, possibly to increase casting distance, the rear plate is stamped "Made by Hardy Bros. Ltd., Alnwick, England" and numbered "34333" beside the foot, included with the reel is the green baize lined teak case with an interior fitted to take the additional handle and two brake arms along with the reel, leather wrap-around strap a.f. and lid black stenciled "H.4", circa 1937 (see illustration)
£1500-2500



26

A Hardy Perfect 3 3/8" trout fly reel, ivory handle, brass foot, strapped rim tension screw and 1912 check mechanism, contracted drum with four rim cusps and milled nickel silver locking screw, faceplate stamped central circular logo and neatly block engraved previous owners initials, wear from normal use, circa 1915

£200-300

27

A fine Hardy Altex No.2 Mk.III fixed spool reel in "wartime" black finish, left hand wind folding ebonite handle, full bail arm and ebonite spool with four point tension adjuster, in very good overall condition and in rexine case, 1940's

£130-180

28

A scarce Hardy Triumph 3 1/4" bait casting reel, shallow cored drum with twin ebonite handles, jewelled spindle bearing and spring release latch, brass foot, rim mounted casting trigger, milled tension regulator and rear ivory quadrant weight indicator and brake withdrawal stud, wear from normal use, circa 1928

£200-300

29

A fine Kabuto 3 piece glass fibre trout fly rod, 7'6", #4, clear/black tipped silk wraps, oxidized sliding alloy reel fitting, stacked bamboo seat, agate line butt ring, snake eyes, spigot joints, as new condition, in bag and alloy tube

£200-300

30

A good Charlton 8350c Configurable trout fly reel, black anodised, left hand wind model with #1-5 ventilated spool, counter-balanced rosewood handle, block foot and rear spindle mounted tension adjuster, as new condition (see illustration)

£450-650



31

A Hardy St George 3 3/8" trout fly reel, Shallow cored drum with ebonite handle and three screw spring latch, brass foot, neatly tapered at both ends, white agate line guide (no cracks), milled rim tension screw and Mk.II check mechanism, wear from normal use, 1930's

£140-180

32

A Hardy Super Silex 3 3/4" extra wide bait casting reel, shallow cored solid alloy drum (no perforations) with twin ebonite handles and spring release latch, ribbed brass foot ivory rim mounted casting trigger, milled tension screw and rear ivory quadrant weight indicator, wear to enamel finish from normal use, circa 1950

£200-300

33

A Zephyr style 4" centre pin reel, mahogany faced alloy backed drum with twin horn handles and four screw spring release latch, brass strap back foot (filed) alloy backplate with sliding brass optional check button and a Harry Jackson 4" alloy centre pin reel, twin ebonite handles, dual optional check levers (2)

£120-160

34

A Hardy Marquis No.2 salmon fly reel, ebonite handle, two screw drum latch, ribbed brass foot, rear tension adjuster, in zip case and a Hardy Exalta fixed spool reel and spare spool, folding handle, full bail arm, in original card box (2)

£120-160

35

A rare early 19th Century Kill Devil 3" bait, the copper wire bound fish shaped lure with wire loop eye, twin head and tail mounted single barbed hooks and cut vellum tail, a very rarely seen early minnow bait as illustrated in Salter's Anglers' Guide, 1825, possibly by Milward's, see Sandford C: *Best of British Baits*, pg.15 (see illustration)
£400-600



36

A rare The H.W. Patent Spring spoon bait, the 2" copper spoon body with silvered underside, stamped model detail and patent 8965, mounted double wire hook with two holding brackets and split ring eye, circa 1900
£200-300

37

A rare early 19th Century 2 1/4" Devil silk bound bait, the slender fish shaped lure with silver tinsel, red and green silk spiral bound body, nickel silver cut metal tail and loop eye, lacking hooks, possibly by Milward's, circa 1830, Sandford C: *Best of British Baits*, pg.15 (see illustration)
£300-400



38

A scarce Hardy Perfect "spitfire" alloy 2 7/8" trout fly reel, ebonite handle, brass foot, milled rim tension screw and Mk.I check mechanism, interior stamped "J.S." (Jimmy Smith), light wear to finish from normal use, circa 1940
£300-400

39

A very rare B. James "Avocet" Built to Endure logo 3 piece whole and built cane float rod, 11'3", marbled silk wraps, sliding alloy reel fittings, brass spigot suction joints, agate lined butt and tip rings and full open bridge rings throughout, slightly swollen cork handle, later over varnished, and with painted date "1953" beneath alloy collar, gold pyramid BTE logo, lozenge gold model and makers labels, previous owners name vertically ink inscribed, a very rarely seen early example of the Avocet rod, circa 1952, in later bag
£600-900

40

An Allcock Aerial model 7950-T3 4" narrow drummed centre pin reel, caged and six spoked drum with twin ivory handles, ventilated front flange and twin release/regulator forks, brass stanchion foot, rear sliding optional check button and calliper spring check mechanism, used condition, circa 1915 (see illustration)
£200-400



41

An Allcock Aerial Popular 4" centre pin reel, caged and six spoked drum with twin xylonite handles, solid flanges and twin release/regulator forks, brass foot, rear optional check button and bar spring check mechanism and an Allcock Aerial C815 3 1/2" centre pin reel, finish worm, both in used condition (2)
£120-160

42

A Hardy St Andrew salmon fly reel, composition handle, ribbed alloy foot, two screw drum latch, milled rim tension screw

and compensating check mechanism, twin screw nickel silver "U" shaped line guide, in zip case and a Hardy Elarex bait casting reel, chrome finish, twin ebonite handles, level line mechanism, in rexine case (2)

£120-160

43

A Hardy "Koh-i-Noor" 2 piece cane trout fly rod, 8'9", #7, crimson silk wraps, sliding alloy reel fitting, suction joint, 1964, in bag

£130-180

44

A collection of various fishing tackle comprising eleven various fly and bait casting reels by Pflueger, Young's et al and six various cane, carbon and glass fibre fly and spinning rods by Hardy, Sharpe's et al including a Hardy LRH No.2 cane salmon spinning rod (Q)

£130-180

45

A fine Hardy Fortuna 6" big game centre pin reel, reverse tapered twin ebonite handles on brass cross bar arm mounted above a six point capstan star drag, brass block foot, Andres patent anti-reverse drum mechanism, fixed click check mechanism, only very light signs of use to grey enamel finish, 1950's (see illustration)

£600-900



46

A good Hardy Perfect 3 5/8" trout fly reel, ivory handle, pierced brass foot, strapped rim tension screw and early calliper spring check mechanism, contracted drum with four rim cusps and milled nickel silver locking

screw faceplate stamped central circular logo, reel retains much of the original lead finish, circa 1900

£260-360

47

A Hardy Fly 3 1/2" light salmon fly reel, ebonite handle, ribbed brass foot, nickel silver telephone drum latch, milled brass rim tension screw and Mk.II check mechanism, interior stamped "J.S." (Jimmy Smith), light wear from normal use only, circa 1940

£200-300

48

A rare Hardy Jock Scott XLM Tournament multiplying bait casting reel, 3.5:1 ratio gearing, twin off-set reverse tapered ebonite handles, ribbed alloy foot, rim mounted drum release lever, twin milled nickel silver spindle caps, backplate stamped make and model details and both plates scratched "27", wear from normal use only and a rarely seen model circa 1950 (see illustration)

£700-1000



49

A rare Hardy Zane No.1 prototype 3 3/4" saltwater/light salmon fly reel, non-production model with black anodised finish, large arbour drum with slotted ventilated ports and counter-balanced handle, foot mounted on two polished alloy posts, rear plate with two further support posts and spindle mounted milled tension adjuster, very light signs of use from factory testing only

£300-400

50

A fine S.E. Bogdan 400 multiplying salmon fly reel, right hand wind model with silver/black anodised finish, 2:1 ration retrieve, counter-balanced serpentine crank handle set within an anti-foul rim, alloy block foot stamped model details, rear off-set ten point graduated tension adjuster, milled optional check button and applied rectangular trade plaque, reel is in unused condition and with original suede pouch and printed care instructions (see illustration)

£4000-6000



51

A Dingley built Nova 4" alloy bait casting reel, caged drum with twin ivory handles and spring release latch, brass bridge foot, cut-away rim section, rim mounted ivory casting trigger and strapped tension regulator screw, interior stamped "D.1", light wear to lead finish from normal use, circa 1920

£140-240

52

A Wallace & Kerr 4 1/2" Dingley built salmon fly reel, domed ivory handle, brass foot, telephone drum latch and fixed calliper spring check mechanism, interior stamped "D.1" and a similar style Westley Richards Dingley built 3 1/2" light salmon fly reel with adjustable calliper spring check mechanism, interior stamped "D.1", both reels retaining much of the original lead finish, circa 1920 (2)

£150-250

53

A Wheatley pigskin coarse fisherman's compendium wallet, the rectangular case fitted central removeable treen float and line winder, end pouch pockets and parchment cast leaves withy felt damper, wrap around strap, circa 1900

£160-260

54

A Farlow Heyworth 3 1/8" alloy trout fly reel, ivory handle brass foot, strapped rim tension screw and silent pressure brake check mechanism, drum with milled nickel silver retaining screw, stamped Holdfast logo and model details and a Bernard & Sons 4 1/4" alloy salmon fly reel, xylonite handle, brass foot, adjustable bar spring check mechanism (2)

£130-180

55

A fine Ted Godfrey Salmon III direct drive salmon fly reel, left hand wind model with black anodised end plates, serpentine counter-balanced rosewood handle, bridge foot, triple cage pillars, rear off-set ten point graduated tension adjuster and milled alloy drum pressure screw, as new/unused condition (see illustration)

£1300-1800



56

A Thomas & Thomas "DH1409-5" five piece carbon salmon fly rod, 14', #9, blue silk wraps, anodised screw grip reel fitting, light use only, in bag and cloth covered tube

£160-260

57

A good Thomas & Thomas "DH1309-4" 4 piece carbon salmon fly rod, 13', #9, blue silk wraps, anodised screw grip reel fitting, as new condition, in bag and alloy tube
£160-260

58

A good Sage "One" 6 piece carbon salmon fly rod, 14', #9, black silk wraps, anodised screw grip reel fitting, only very light signs of use, in bag and cordura tube
£160-260

59

A Hardy Zane No.2 salmon/saltwater fly reel, silver anodised finish, large arbour skeletal drum with counter-balanced handle and milled drum release nut, pierced bridge foot on twin blue anodised stanchion supports, rear plate with two further anodised support posts and spindle mounted milled tension adjuster, only very light signs of use, in neoprene pouch
£250-450

60

A fine Hardy Brunswick Cascapedia Trout direct drive fly reel, limited edition No.331, right hand wind model, ebonite and nickel silver construction, counter-balanced serpentine crank handle set within an anti-foul rim, bridge foot, five drum pillars (two roller), rear spindle mounted eleven point arrow head graduated tension adjuster, faceplate inset three circular medallions details make, model and limited edition number, reel is in excellent/unused condition and in original block leather case (see illustration)
£500-800



61

A good Winston "Air" 4 piece boron trout fly rod, 9', #5, green silk wraps, burl wood reel seat and nickel silver screw grip reel fitting, virtually as new condition, in bag and tube
£140-240

62

A good Bo Mohlin Mini Trout fly reel and block leather case, gold/dark blue anodised finish, counter-balanced serpentine crank handle set with an anti-foul rim, perforated face and drum plate, bridge foot, triple cage pillars, fixed check mechanism, only very light signs of use (see illustration)
£240-340



63

A Sage Spectrum 7/8 trout fly reel, large arbour, skeletal drum with counter-balanced handle, block foot, rear spindle mounted tension adjuster, as new condition, in neoprene pouch and a Winston 2 piece boron trout fly rod, 9', #7, wooden reel seat with alloy screw grip fitting, light use only, in bag (2)
£160-260

64

A Hardy Marquis No.2 salmon fly reel and spare spool, composition handle, ribbed brass foot, two screw drum latch and rear tension adjuster and a Sage Graphite IV 4 piece carbon salmon fly rod, 15', #10, alloy screw grip reel fitting, in bag (2)
£140-180

65

An Edward Vom Hofe Restigouche 6/0 direct drive salmon fly reel, ebonite and nickel silver construction with counter-balanced serpentine crank handle set within an anti-foul rim, pierced bridge foot, chip to one end, stamped model details and date Mark "E164" (1912), quadruple cage pillars (two double roller), sliding circular optional check disc to face and rear spindle mounted seven point graduated tension adjuster and applied rectangular nickel silver name plaque, engraved previous owners name, circa 1912 (see illustration)

£700-1000



66

A Hardy Super Silex 2 3/4" bait casting reel, shallow, slotted core drum with win ebonite handles, jewelled spindle bearing and spring release latch, ribbed brass foot, rim mounted ivory casting trigger and milled tension screw, rear quadrant weight indicator and brake withdrawal stud, light use only, circa 1930

£200-300

67

A rare Gregory Excelsior Minnow bait, the 2" long white metal fish shaped lure with trout painted decoration, twin spinning vanes stamped maker and model details, twin side and one rear gut mounted flying treble hooks (one side hook loose), head box swivel, a rarely seen example, circa 1890 (see illustration)

£700-1000



68

A Hardy Pearl Spoon 3" bait, in original white card trade box and a Hardy 2 1/2" Colorado spoon bait, in original white card trade box, both in new/unused condition, 1930's (2)

£250-350

69

A Hardy Darting and Diving 6" big game lure, the green/red painted wooden body with one belly and one tail mounted treble hook and nickel silver loop eye, a Hardy Jim Vincent Broads Spoon 5" pike bait and a Hardy 6" Stewart Spoon big game spinning bait (3)

£140-180

70

A rare Hardy Bouglé 3" trout fly reel, ivory handle, nickel silvered brass foot, raised triple pillars (one nickel silver roller), strapped rim tension screw and 1912 bar spring check mechanism, multi-perforated drum face with milled locking screw, faceplate stamped central circular logo, wear from normal use, in un-named block leather case, circa 1915 (see illustration)

£1500-2000



71

A scarce Wyer Frères L'Euréka 1 ½" brass raised pillar trout winch, tapered horn handle, bridge foot, triple raised pillars, fixed check mechanism, faceplate with domed iron spindle locking screw and stamped retailers details, good overall condition, circa 1900

£200-300

72

A good Allcock Aerial 4" model 950 T-6 centre pin reel, caged and six spoked drum with twin xylonite handles, perforated front flange (eight holes) and twin release/regulator forks, brass stanchion foot, rear sliding optional check button and bar spring check mechanism, backplate stamped circular trademark and reel retaining virtually all the original finish, circa 1925 (see illustration)

£350-550



73

A B. James "Richard Walker Mk.IV" 2 piece cane carp rod, 10', crimson silk inter-whipped, sliding alloy reel fittings, "donut" cork handle, suction joint, London transfer label, good overall condition, in bag

£150-250

74

A B. James "Richard Walker Mk.IV Avon" 2 piece cane coarse rod, 10', crimson silk inter-whipped, sliding alloy reel fittings "trumpet" cork handle, suction joint, London transfer label, good condition, in bag

£160-260

75

A black stove enamelled rectangular salmon fly reservoir, fitted five lift-out trays each with bars of nickel silver spring fly clips and holding a good selection of approximately 380 salmon flies, including low water patterns and five Farlow examples in original packets, case with swing carry handle (see illustration)

£300-500



76

A scarce Hardy Perfect 3 ⅝" trout fly reel, ivory handle, brass foot, strapped rim tension screw and early calliper spring check mechanism, contracted solid drum (no perforations) with milled nickel silver locking screw and faceplate stamped open oval and straight line logo's, wear from normal use, circa 1898

£350-550

77

A rare Hardy Brass Faced Perfect 3 1/8" trout fly reel, domed ivory handle, brass foot, neatly tapered to both ends, strapped rim tension screw and early calliper spring check mechanism, contracted drum with four rim cusps and milled nickel silver locking screw, faceplate stamped Rod in Hand trademark, enclosed oval and straight line logos, very small corrosion pit to outer rim otherwise reel retains much of the original finish, circa 1900 (see illustration)

£600-900



78

A good Hardy Hercules 4" brass salmon fly reel, ivory handle on raised winding plate, pierced and waisted bridge foot, quadruple cage pillars, fixed check mechanism, faceplate with raised two screw spindle boss and stamped Rod in Hand trademark and enclosed oval logo, reel retains virtually all the original bronze patina, circa 1896

£200-300

79

A scarce Hardy Perfect 3 1/2" salmon fly reel, ivory handle on milled brass cup, brass foot, strapped rim tension screw and early calliper spring check mechanism, slightly dished drum with four rim cusps and milled nickel silver locking screw, faceplate stamped Rod in Hand trademark, open oval and straight line logos, wear from normal use, circa 1898

£400-600

80

A rare Hardy Brass Faced Perfect 4 1/2" Auxiliary Brake salmon fly reel, domed ivory handle, pierced bridge foot, rim mounted spring loaded brass pressure brake arm, strapped rim tension screw with Turk's head locking nut and early calliper spring check mechanism, nickel silver drum locking screw, faceplate stamped Rod in Hand trademark and straight line logo, wear to finish from normal use, circa 1900 (see illustration)

£800-1200



81

A good Bernard (Dingley made) Nova 4 1/2" bait casting reel, caged drum with twin ivory handles mounted on alloy cross-bar winding arm, brass bridge foot, cut-away rim section, rim mounted ivory casting trigger and two further rim casting controls, interior stamped "D.3", only light wear to lead finish, circa 1920

£160-260

82

A scarce Hardy St John 3 7/8" trout fly reel, shallow cored drum with ebonite handle, and three screw drum latch, brass foot, milled rim tension screw and lighter trout Mk.II check mechanism and a standard Hardy St. John light salmon fly reel of similar design and with heavier duty salmon Mk.II check mechanism, both with light wear from normal use, 1920's (2)

£300-400

83

A scarce Bernard & Son angler's knife, fitted six Sheffield steel folding tools, nickel silver side plates and hinged shackle, one side plate stamped makers details and block engraved previous owners name, a seldom seen model, circa 1930 (see illustration)

£200-300



84

A scarce Hardy Perfect 2 7/8" trout fly reel, xylonite handle, brass foot, milled rim nickel silver tension screw and Mk.II check mechanism, wear from normal use, circa 1920

£250-350

85

A rare 19th Century brass 2 7/8" spike fitting winch, turned bulbous bone handle on curved crank winding arm with domed iron locking nut, quadruple cage pillars, fixed check mechanism, iron block foot with square tapered threaded spike fitting, circa 1840 (see illustration)

£400-600



86

A J. Jones brass 3 3/4" folding handle salmon winch, turned bone handle on straight crank winding arm with domed iron locking screw and milled locking disc, stamped Kite mark and engraved registration details for 1843, cut-away rim handle recess, block foot, quadruple cage pillars, rear raised check housing and fixed check mechanism, faceplate script engraved makers details, circa 1855

£300-400

87

A Hardy brass and ebonite 3 1/2" light salmon fly reel, domed ivory handle, twin German silver rims, bridge foot, quadruple cage pillars, fixed check mechanism, faceplate with raised two screw spindle boss and stamped Rod in Hand trademark and enclosed oval logo, wear from normal use, circa 1895

£160-260

88

A Loomis "GL3" 3 piece carbon salmon fly rod, 14', #9, black silk wraps, anodised screw grip reel fitting, light use only, in bag and cordura tube and a J.W. Young 4 1/4" salmon fly reel, rim tension screw, spring drum latch (2)

£120-160

89

A good Hardy St George 3" trout fly reel, ebonite handle, ribbed brass foot, three screw drum latch, white metal line guide, milled rim tension lever and Mk.II check mechanism, only very light wear to dark lead finish, 1940's

£240-340

90

A fine S.E. Bogdan model 0 multiplying light salmon fly reel, right hand wind model with silver/black anodised finish, 2:1 ration retrieve, counter-balanced serpentine crank handle set within an anti-foul rim, alloy block foot stamped model details, rear off-set ten point graduated tension adjuster, milled optional check button and applied rectangular trade plaque, reel is in unused condition and with original suede pouch (see illustration)
£2500-4500



91

A Hardy "LRH Salmon Fly" 3 piece (2 tips) cane salmon fly rod, 14', #10, green/scarlet tipped silk wraps, green silk inter-whipped, sliding alloy screw grip reel fitting, studlock joints, 1964, very good condition, in bag
£160-260

92

A Pezon et Michel "Ritz Super Parabolic PPP Fario Club" 2 piece (2 tips) cane trout fly rod, 8'5", 5/6, green/scarlet tipped wraps, bronze anodised screw grip reel fitting, staggered ferrule, suction joints, good overall condition, in bag
£180-280

93

A Hardy "C.C. de France" 2 piece cane trout fly rod, 8', green silk wraps, tan inter-whippings, sliding alloy reel seat, suction joint, 1946, in bag and in Ogden Smith leather covered alloy tube (2)
£130-180

94

A Hardy Princess trout fly reel, composition handle, alloy foot, two screw drum latch, rim tension screw and compensating check mechanism, two screw nickel silver "U" shaped line guide and a Sharpe's "Eighty Eight" 2 piece cane trout fly rod, 8'8", #5/6, crimson wraps, screw grip reel fitting, in bag (2)
£130-180

95

A rare Holtzapffel fly tying vice, brass collared, tapered adjustable iron shaft with butterfly screw locking fly jaws, rectangular brass table clamp fitting, stamped makers name and with milled circular brass locking screw, circa 1900 (see illustration)
£200-300



96

A collection of Edwardian classic salmon fly tying feathers including indian crow, blue chatterer, toucan, golden oriole, albatross et al and a TBK teak fly tying case with fitted interior
£200-300

97

A teak double sided fly box holding a good selection of Esmond Drury hair wing treble hook salmon flies and Waddingtons, a box holding a very good selection of dapping flies and eleven Wheatley alloy waistcoat fly boxes holding a good selection of various, salmon, sea-trout and trout flies (Q)
£130-180

98

An Abu Ambassadeur 6000c bait casting reel, black finish, grooved rims, single handle and sliding optional check button, foot stamped "020900", a Pflueger Supreme baitcasting reel, in card box, a box of various devon minnow baits and two Hardy cane spinning rods; an LRH No.1 Spinning and a Wanless 9/10lbs, in bags (Q)

£140-240

99

A Thomas & Thomas "Horizon" 3 piece carbon salmon fly rod, 16', anodised screw grip reel fitting, used condition, in bag and alloy tube and a collection of ten various other carbon, fibre glass and cane fly and spinning rods, various makers including Bruce & Walker, Allcock, Farlow et al, in bags (11)

£150-250

100

A fine and rare Hardy Unique Salmon fly reservoir, the rectangular polished mahogany case with fall front door, interior fitted ten sliding drawer each with ivoryine bun handle, two ivoryine index tablets and bars of nickel silver spring fly clips holding a collection of 248 American/Canadian pattern single iron salmon flies, door interior with applied rectangular metal trade plaque, top with inset brass name plaque and recessed swing handle, good overall condition, circa 1915 (see illustration)

£2000-3000



101

A Hardy St George Mk.2 3 ¾" trout fly reel, composition handle, alloy foot, white agate line guide (no cracks), rim tension screw and dual check mechanism, new/unused condition and another similar reel with white heightened model details, light use only, in zip case (2)

£150-250

102

A Hardy St George 3" trout fly reel, ebonite handle, ribbed brass foot, two screw drum latch, white agate line guide (no cracks), milled rim tension screw and Mk.II check mechanism, light wear to enamel finish, 1950's

£180-260

103

A Hardy St George 3" trout fly reel, , ebonite handle, ribbed brass foot, two screw drum latch, white agate line guide (no cracks), milled rim tension screw and Mk.II check mechanism, finish worn, in cream card box and a similar Hardy St George 3 ¾" trout fly reel, re-enamelled, in cream card box (2)

£180-260

104

A fine Stephen Boshoff hand built 3 piece cane trout fly rod, 8', #5, clear silk wraps, walnut reel seat with black anodised screw grip reel fitting, nickel silver ferrules, carbide butt ring and snake eyes throughout, in virtually as new condition, in bag and alloy tube

£500-800

**** Stephen Boshoff is recognized as the premier split cane rod maker in South Africa, producing between 5-10 hand crafted rods per year. A most sought after example of this fine craftsman's work**

105

A fine Munsey Wheby "Pines River" 2 piece (2 tips) flamed cane brook trout rod, 7'9", #2, flamed cane, stained maple wood reel seat, sliding bronzed reel fitting, Mildrum stripping guide and snake eyes throughout, bronzed suction ferrules, rod was originally incorrectly inscribed as being a #4 rod but the present owner requested this was left so as not to disrupt the fine original finish, the owner has fished this rod only once, it is sold with original bag and bespoke hexagonal oak and leather strapped tube and is in exceptional overall condition, a rare opportunity to acquire a fine, light line rod by one of America's most respected makers

£600-800

106

An Ari't Hart F2 Stream (made for J.C. Field & Stream) trout fly reel, black anodised, right hand wind model, multi-perforated drum with counter-balanced handle and turn key drum release latch, full annular line guide, stancheon foot with triform support, rear sliding optional check button and spindle mounted knurled tension wheel, red heightened retailers details to rear (see illustration)

£250-450



107

A Lamson Waterworks 2 trout fly reel, graphite anodised finish, large arbour drum, composition handle, stancheon foot, rear spindle mounted tension wheel and a Powell "LGT 9056" 4 piece carbon trout fly rod, 9', #5/6, wooden reel seat, alloy screw grip fitting, in bag and alloy tube, both with light use only (2)

£180-260

108

A good Winston Perfect 2 7/8" wide drummed trout fly reel, green anodised finish, ivorine handle, alloy foot, milled rim tension screw and dual compensating check mechanism, milled nickel silver drum locking screw, "U" shaped nickel silver line guide, as new condition (see illustration)

£300-400



109

A Winston "LT" 5 piece boron brook trout fly rod, 7'9", #3, green silk wraps, lightwood reel seat with nickel silver screw grip fitting, light use only, in bag

£130-180

110

A good D.L. Robichaud 3 3/16" trout fly reel, right hand wind model with black anodised end plates, serpentine counter-balanced crank handle, alloy block foot, fixed click check mechanism, multi-perforated face and front drum plate, excellent condition (see illustration)

£250-450



111

A Hardy Perfect 4" salmon fly reel, ebonite handle, ribbed brass foot, revolving nickel silver line guide, milled rim tension screw and Mk.II check mechanism, milled nickel silver drum locking nut, only light wear to lead finish. 1940's

£240-340

112

A pair of Ross No.1 trout fly reels, each with black finish, rim tension screw and ventilated drum and a pair of Sage "590-4 RPL" 4 piece carbon trout fly rods, 9', #5, wooden reel seats, screw grip fittings, in bags (4)

£160-260

113

A very rare Hardy Silex Rex bait casting reel, twin reverse tapered ebonite handles on shaped cross bar nickel silver winding arm, ribbed brass foot, level line mechanism, milled nickel silver spindle caps, rear optional nickel silver check lever, rim mounted nickel silver milled tension screw and faceplate with inset spare level line pawl capsule, wear to finish from normal use and a very rarely seen model produced 1935-37 only (see illustration)

£900-1300



114

A Bernard Dingley built 3 1/2" bait casting reel, caged drum with twin ivorine handles and spring release latch, brass bridge foot, three rim mounted casting controls, interior stamped "D" and a similar Bernard Master 3 1/2" silent check bait casting reel of similar design, both circa 1920 (2)

£140-240

115

A rare Allcock Model Perfect 3" trout fly reel, based on the Aerial model with caged and six spoked drum, counter-balanced xylonite handle, ventilated front flange (ten holes), twin release/regulator forks, brass foot, rear sliding nickel silver optional check button and bar spring check mechanism, backplate stamped make and model details a rarely seen model, circa 1925 (see illustration)

£800-1200



116

A Foster's Dingley built 3" trout fly reel, ebonite handle, brass foot, rim tension screw and Mk.I check mechanism, floating ball race, nickel silver drum locking screw and interior stamped "D.4" and an unnamed Dingley 3" trout fly reel, caged drum with ivorine handle and telephone drum latch, brass line guide, fixed calliper spring check mechanism, interior stamped "D.6", both reels retaining almost all the original dark lead finish (2)

£180-260

117

A Dingley built 4" alloy salmon fly reel and (later) spare spool, composition handle, brass foot, milled rim tension screw and bar spring check mechanism, drum with two bands of large and small perforations and milled nickel silver locking screw, interior stamped "D.5", un-leaded later made spare spool, 1920's

£120-160

118

A scarce Allcock's Caledonian Model No 537, 3 ½" gutta percha bait, the curved fish shaped lure with brass fins and tail, painted finish, black spot/white glass eyes, hollow spindle with gimp and bead mounted rear treble hook, rare example illustrated in the maker's 1866 and 1871 catalogues, ex Graham Turner collection (see illustration)
£200-300



119

A rare Carswell New Sylph (Bells Life) 1 ¾" horn minnow bait, painted fish shaped body with out-curved horn tail twin side mounted gut traced flying treble hooks and gut loop eye, circa 1910
£120-160

120

A very rare un-named Ustonson Pearl Minnow 1 ½" bait, fish shaped lure with two mother o'pearl flanks mounted to nickel silver plate, loop eye with twin gimp mounted flying treble hooks, short gimp trace with box swivel, this model can be seen on Ustonson's trade card circa 1755 and is also illustrated in Wm. Blacker's *Art of Angling* 1885 ed. (see illustration)
£800-1200



121

Five Hardy fully dressed salmon flies in original cellophane envelopes, comprising; 6/0 Durham Ranger, 5/0 Silver Grey, 4/0 Hairy Mary, 4/0 Beauty Snow Fly and a 4/0 Sweep, each with printed pattern tab (5)
£100-250

122

A Hardy Perfect 2 ½" wide drummed trout fly reel, ivory handle, brass foot, strapped rim tension screw and 1906 calliper spring check mechanism, slightly dished drum with four rim cusps and milled nickel silver locking screw, faceplate stamped central circular logo, wear from normal use, in un-named black leather case, circa 1908 (see illustration)
£450-650



123

A Malloch Perth style lignum vitae and brass salmon fly reel, tapered rosewood handle on brass winding plate, bridge foot (neatly filed), quadruple cage pillars, fixed check mechanism, faceplate with raised two screw spindle boss and early engraved makers details, circa 1885
£200-300

124

A B. James "Kennet Perfection" 2 piece cane float rod, 11'6", crimson inter-whipped, detachable cork handle with sliding alloy reel fittings, stand-off rings, suction joints, "donut" handle and London transfer label, tip 2" short, re-varnishes at some time, in bag
£160-260

125

A scarce Allcock Aerial 7950-T6 3 ½" narrow drummed centre pin reel, caged and six spoked drum with rarely seen double ventilated front flange, twin xylonite handles and twin release/regulator forks, brass stanchion foot, rear sliding optional check button and bar spring check mechanism, stamped circular trademark, circa 1925 (see illustration)
£350-450



126

A Hardy "Halford Knockabout" 2 piece cane trout fly rod, 9'6", tan inter-whipped, screw grip reel fitting, studlock joint, ferrules re-whipped, 1957, in bag and a Hardy "Perfection" 2 piece cane trout fly rod, 9'6", crimson inter-whipped, sliding brass reel fitting, lockfast joint, 1909, some restoration, in bag (2)
£140-240

127

A Dingley built 3 ¾" Climax style bait casting reel, caged drum with twin ivory handles and spring release latch, brass foot, three rim mounted casting controls and interior stamped "D", circa 1915 and a Hardy Silex No.2 3 ¼" bait casting reel, replacement brass faceplate (2)
£130-180

128

A good Hardy Altex No.2 Mk.V fixed spool reel, folding ebonite right hand wind handle, full bail arm, nickel silver star spool tension adjuster, as new condition, and another similar reel with spare spool and only very light use, 1950's (2)
£140-180

129

A B. James "Richard Walker Mk.IV" 2 piece cane carp rod, 10', crimson silk inter-whipped, sliding alloy reel fittings, "onion" cork handle, suction joint, agate lined butt and tip rings, London transfer label, in later bag
£150-250

130

A good Allcock Aerial model 7950-T2 4" narrow drummed centre pin reel, caged and six spoked drum with twin tapered horn handles, ebonite rear flange and twin release regulator forks, brass stanchion foot, rear sliding optional check button and calliper spring check mechanism, front drum flange stamped "patent", only very light wear to finish, circa 1915 (see illustration)
£350-550



131

A Young's Purist II model 2048 limited edition 3 ¾" centre pin reel, black anodised finish, shallow cored drum with twin composition handles, six spokes, twin release/regulator forks, pierced alloy foot, wire B.P. line guide, rim mounted optional check lever and bar spring check mechanism, interior stamped S/R 181, new/unused condition in hide zip case and teak presentation box
£180-260

132

A Hardy Triumph 3 1/4" centre pin reel, shallow cored drum with twin short ebonite handles and dome brass locking nut, Bickerdyke line guide, stanchion foot, rear brass sliding optional check button and calliper spring check mechanism, light wear from normal use only, 1930's

£160-260

133

A Heaton's 4" Nottingham walnut centre pin reel, twin horn handles, nickel silver three screw spring drum latch, brass starback foot with sliding optional check button and twelve various other star and strap back Nottingham centre pin reels (13)

£130-230

134

A Young's Trudex 4" centre pin reel, black finish, twin handles, Bickerdyke line guide, rear optional check lever, light use, in box, three similar Rapidex centre pin reels and seven various other centre pin reels including three boxed Allcock Aerialite models (11)

£140-240

135

A rare Edward Vom Hofe Tobique 1/0 multiplying silent check salmon fly reel and block leather case, ebonite and nickel silver construction, 2 1/2:1 retrieve, counter-balanced alloy serpentine crank handle set within an anti-foul rim, pierced alloy foot stamped model details and date mark "Z 08" (1933), triple cage pillars (two double roller), rear spindle graduated five point tension adjuster with red heightened indicators, a very rarely seen variant, 1933 (see illustration)

£1600-2600



136

An Edward Vom Hofe Islamorada No.1 model 650 multiplier reel and block leather case, ebonite and nickel silver construction with off-set counter-balance ebonite handle mounted above a six point capstan star drag adjuster, rim mounted drum release lever, pierced foot stamped model details and date mark "Y 605" (1932), triple cage pillars, hinged spindle oil port covers, face red heightened previous owners initials "M.D.W.", good overall condition and a scarce model, 1932

£400-600

137

A rare Edward Vom Hofe Commander Ross 12/0 model 722 big game multiplier reel, ebonite and nickel silver construction, 2:1 ratio gearing, off-set counter-balanced bullet grip handle mounted above a six point capstan star drag, rim mounted drum release lever, pierced foot stamped model details and date stamp "E 31" (1938), triple drum pillars, two sets off rim/pillar mounted harness lugs, rear milled sliding optional check disc, hinged spindle oil port covers, face stamped previous owners name, very small chip to front rim, 1930 (see illustration)

£1000-1500



138

A Hardy The Fly 3 3/8" trout fly reel, solid drum with ebonite handle and domed brass locking screw, brass foot, fixed bar spring check mechanism, un-leaded finish, light wear from normal use, 1940's

£180-260

139

A scarce Hardy Perfect 3 7/8" silent check trout/light salmon fly reel, ebonite handle, ribbed brass foot, white agate line guide (no cracks), milled rim tension screw and silent pressure brake mechanism, faceplate stamped make and model details, wear from normal use, circa 1930

£300-400

.....

140

A very rare Hardy Fortuna 9" Extra Wide big game centre pin reel, twin reverse tapered ebonite handles on Monel cross bar winding arm mounted above a six point capstan star drag, Monel block foot, Andreas patent anti-reverse drum mechanism, backplate stamped make and model details, a rarely seen model of which factory records show only five were produced between 1935-37, see Drewett J.: Hardy Brothers..., pg. 578 (see illustration)

£2500-4500



141

A Hardy Natal Surf 7 1/2" sea centre pin reel, solid narrow drum with tapered ebonite handles and milled brass spindle tension adjusting nut, brass stanchion foot, faceplate stamped make and model details, wear from normal use, 1930's

£500-800

.....

142

An unusual Hardy Improved Farne 5" variant sea centre pin reel, drum with ventilated front plate, reverse tapered ebonite single handle (advertised with twin handles) and nickel silver telephone drum latch, brass auxiliary rim pressure brake, brass block foot, rim mounted optional check lever and bar spring check mechanism, interior stamped "A.H.W." (Arthur Wall), backplate stamped model details, a most unusual variant, lacking the Silex type rim brake lever, possibly made to special order, drum face neatly block engraved previous owners initials, 1930's (see illustration)

£600-900



143

A Malloch Perth style 4 3/4" rosewood salmon fly reel, tapered ivorine handle, brass bridge foot (neatly reduced), quadruple cage pillars, fixed check mechanism, brass winding plate with raised two screw spindle boss and early script engraved makers details, circa 1890

£180-260

.....

144

A Malloch Sun and Planet 4" brass faced salmon fly reel, faceted treen winding knob with patent sun and planet anti-reverse gearing, brass bridge foot and quadruple cage pillars, fixed check mechanism, faceplate with stepped spindle boss and stamped oval logo, circa 1915

£160-220

.....

145

A rare Haywood brass clamp fitting multiplying winch, turned bone handle on off-set curved crank winding arm, rim mounted drum locking pin, triple cage pillars, riveted block foot with clamp fitting, perforated to take leather pad and with thumb locking screw, faceplate stamped makers details, 2" diameter, circa 1850 (see illustration)

£350-550



146

An early Nottingham 4" centre pin reel, ebonised wooden drum with twin turned bulbous bone handles and milled brass spindle locking disc, German silver bound rims, brass foot on iron strap support, no check, possibly by Wm. Dann and a Brailsford style 4 1/2" Nottingham walnut centre pin reel, horn handles, slipper release latch, Bickerdyke line guide, fish tail starback foot support with rear sliding optional check button and calliper spring check mechanism, 1870's (2)

£300-400

147

A rare Allcock's OTO 44 threadline casting reel, off-set drum with oscillating Felton Crosswind style line lay system, rear mounted winding handle, swivelling brass foot with milled alloy line guide and domed alloy gear housing with tension adjusting collar, housing stamped make and model details, 1940's

£300-400

148

A scarce Hardy Brass Faced Perfect 4 1/2" salmon fly reel, domed ivory handle, brass foot, strapped rim tension screw with Turk's head locking nut and early calliper spring check mechanism, slightly dished solid drum (no perforations) with milled nickel silver locking screw faceplate stamped open oval and straight line logos, wear from normal use, circa 1900 (see illustration)

£600-900



149

A Hardy Birmingham 4" brass salmon fly reel, domed cow horn handle, bridge foot, quadruple cage pillars, no check, faceplate with raised two screw spindle boss and stamped Rod in Hand trademark and enclosed oval logo, wear to finish, circa 1896

£150-250

150

A rare Hardy 1894 Brass Perfect 2 1/2" trout fly reel, bone handle, pierced and waisted bridge foot, nickel silver wire annular line guide on three pillars, strapped rim tension screw with early calliper spring check mechanism, open ball race with phosphor bronze bearings (two lacking), dished drum with ventilated arbour, recessed spindle well and two bands of large and small perforations, faceplate stamped central circular 612 patent details and shaded Rod in Hand trademark, light wear to bronze patina from normal use and small solder repair to one drum pillar, circa 1894 (see illustration)

£2500-4500



151

A Hardy Hercules 4 1/2" brass salmon fly reel, domed bone handle, pierced and waisted bridge foot, quadruple cage pillars, fixed check mechanism, raised faceplate with two screw spindle boss and stamped Rod in Hand trademark and enclosed oval logo, overall wear to finish, foot bent at both ends, circa 1895
£160-260

152

A scarce Hardy Brass Faced Perfect 3 1/4" light salmon fly reel, domed ivory handle, pierced brass foot, strapped rim tension screw and early calliper spring check mechanism, drum with four rim cusps and milled nickel silver locking screw, faceplate stamped Rod in Hand trademark and straight line logo, wear to finish from normal use, circa 1900 (see illustration)
£450-650



153

An Orvis Access IV trout fly reel, black anodised finish, counter-balanced handle, multi-perforated drum and rear plate, rear spindle tension adjuster, as new, in pouch and an Orvis "western" 3 piece carbon fly rod, 10', #7, wooden reel seat screw lock fitting, in bag and brass capped alloy tube (2)
£140-240

154

A Sage "Xi-2" 4 piece carbon saltwater fly rod, 9', #8, blue silk wraps, anodised screw grip reel fitting, in bag and alloy tube
£130-180

155

A fine S.E. Bogdan Steelhead 3 1/4" fly reel, left hand wind model with black/silver anodised finish, counter-balanced serpentine crank handle set within an anti-foul rim, pierced foot, multi-perforated drum and faceplate, fixed click check mechanism, rear plate with applied rectangular alloy trade plaque, reel is in new/unused condition and in original suede pouch (see illustration)
£2500-4500



156

A Thomas & Thomas "DH1409-5" 5 piece carbon salmon fly rod, 14', #9, blue silk wraps, anodised screw grip reel fitting, light use, in bag and alloy tube
£150-250

157

A collection of various fishing tackle including a Brady canvas and leather trimmed fly fisher's bag, new/unused condition, a Reddington RS2 7/8 fly reel, an Abu Ambassadeur 823 bait casting reel, in box, a cantilevered tackle box holding a large selection of devon, spoons et al and four various carbon and glass fibre fly rods by Hardy, Shakespeare et al (Q)
£150-250

158

A Hardy "Keith Rollo" 3 piece (2 tips) cane trout fly rod, 9', green silk wraps, sliding alloy reel fitting, suction joints, recently re-whipped and re-ferruled by Hardy's, 1955, in bag and alloy tube
£130-180

159

A good Hardy "LRH Greased Line" 3 piece (2 tips) cane salmon fly rod, 13', green/crimson tipped wraps, green silk inter-whippings, sliding alloy screw grip reel fitting, studlock joints, 1959, only very light use, in bag and alloy tube

£160-260

160

A fine Hardy Cascapedia Salmon 4/0 multiplying salmon fly reel, limited edition No.331, right hand wind model with 2.5:1 ratio retrieve, ebonite and nickel silver construction, counter-balanced serpentine crank handle set within an anti-foul rim, bridge foot, five drum pillars (two roller), rear milled sliding optional check button and spindle mounted seven point graduated tension adjuster, faceplate inset three circular medallions details make, model and limited edition number, reel is in as new/unused condition and in block leather "D" case (see illustration)

£700.000



161

A Hardy Sovereign 8/9 salmon fly reel and spare spool, gold anodised finish, counter-balanced rosewood handle, two screw spring latch, rear sliding optional check button and milled spindle mounted tension adjuster, Ltd. ed. no. 743, in hide zip cases

£160-260

162

A Loop "Cross 9136 MC/MF" 6 piece carbon salmon fly rod, 13'6", #9, black silk wraps, anodised screw grip reel fitting, only very light use, in bag and alloy tube

£180-260

163

A Sage "One" 6 piece carbon salmon fly rod, 13'6", #7, black silk wraps, anodised screw grip reel fitting, new/unused condition, in bag and cordura tube

£160-260

164

A Kingpin Stellar Alta Salmon 3 3/4" salmon fly reel, ivory handle, brass foot, engraved fish motif, ivory line guide, rim mounted brass tension regulator and calliper spring check mechanism, polished alloy drum with milled nickel silver locking screw, brass rimmed faceplate stamped make and model details and Ltd. ed. no. 16, some marks to plate rim, in block leather case and card box

£300-500

165

A fine Charlton Mako 9600 big game/salmon 5" fly reel, right hand wind model with black anodised finish, skeletal drum and frame, counter-balanced rosewood handle, block foot, knurled spool locking nut and rear six point spindle mounted tension regulating wheel, only very light signs of use and in original cloth pouch (see illustration)

£800-1200



166

A Hardy Perfect 3 5/8" trout fly reel, composition handle, alloy foot, brown agate line guide, rim tension screw and dual compensating check mechanism, faceplate with raised spindle boss and stamped model details, only very light signs of use, in zip case

£160-240

167

Three Hardy Marquis No.3 salmon fly reels, each with composition handle, ribbed brass foot, two screw drum latch and rear tension regulator, all in lightly used condition, in zip cases (3)

£200-300

168

Three Hardy Marquis No.2 salmon fly reels, each with composition handle, ribbed brass foot, two screw drum latch and rear tension regulator, all in lightly used condition, in zip cases (3)

£200-300

169

Three Hardy Marquis No.1 salmon fly reels, each with composition handle, polished alloy foot, two screw drum latch and rear tension regulator, nickel silver "U" shaped single screw line guide, all in lightly used condition, in zip cases (3)

£180-260

170

A Hardy Perfect 3 5/8" trout fly reel, composition handle, alloy foot, brown agate line guide, rim tension screw and dual compensating check mechanism, faceplate with raised spindle boss and stamped model details, only very light signs of use, in zip case

£160-240

171

A Hardy "Swift Mk.II" 3 piece carbon trout fly rod, 10'6", #7, grey silk wraps, screw grip reel fitting, in bag and cordura tube

£140-240

172

A Hardy "Marksman 2 T-Series" 4 piece carbon salmon fly rod, 13', #8, green/black tipped silk wraps, anodised screw grip reel fitting, little used condition, in bag, alloy tube and outer bag

£180-260

173

A Hardy "Uniqua" 4 piece carbon salmon fly rod, 14', #9, green silk wraps, black anodised screw grip reel fitting, light use only, in bag and cordura tube

£160-260

174

A scarce Edward Vom Hofe Wahoo 1/0 model 570 multiplier reel, ebonite and nickel silver construction, 2.5:1 ratio gearing, off-set counter-balanced winding arm, twin rim mounted drag and spool release levers, pierced foot, stamped model details and dated marked "V 499" (1929), milled screw to front rim for easy take-apart (this was EVH's first model to incorporate the take apart feature), twin hinged spindle oil port covers, in original block leather "D" case, gilt stamped previous owners initials, 1929

£400-600

175

A fine Otto Zwarg Laurentian 2/0 multiplying salmon fly reel and block leather case, ebonite and nickel silver construction, 2:1 ratio gearing, counter-balanced "S" scroll handle set within an anti-foul rim, pierced alloy foot stamped model details and date mark "B 247" (1947), triple cage pillars (two double roller), rear sliding optional check button and spindle mounted seven point graduated tension adjuster, block leather "D" case gilt stamped previous owners initials, 1947 (see illustration)

£1200-1600



176

A Silex Major wide drummed 4 1/4" bait casting reel, shallow cored drum with twin ebonite handles, spring release latch and jewelled spindle bearing, ribbed brass foot, rim mounted brass auxiliary pressure brake and ivory casting trigger, rear nickel silver tension regulator, wear from normal use, circa 1925

£160-260

177

A Hardy St John 3 7/8" light salmon fly reel, ebonite handle, ribbed brass foot, white agate line guide (no cracks) three screw spring drum latch, milled rim tension screw and Mk.II check mechanism, only very light wear to dark lead finish, circa 1930

£150-200

178

A collection of various fishing tackle, including an Allcock -Bell 6" alloy sea centre pin reel, a Hardy black japanned waistcoat dry fly box, six Wheatley salmon and trout fly boxes, holding various flies and various other items, in fishing bag (Q)

£130-180

179

An Allcock Aerial model 7950-T9 4" centre pin reel, caged and six spoked drum with twin xylonite handles, perforated front flange (eight holes), solid rear plate and twin release/regulator forks, brass foot, rear sliding optional check button and bar spring check mechanism, wear from normal use, circa 1925 (see illustration)

£250-450



180

A scarce early Hardy Lightweight trout fly reel, ebonite handle, alloy foot, three screw spring drum latch and fixed half calliper spring check mechanism, used condition, 1930's

£300-400

181

A Hardy Perfect 4" salmon fly reel, domed ivory handle, pierced brass foot (reduced), strapped rim tension screw with Turk's head locking nut and 1906 calliper spring check

mechanism, slightly dished drum with four rim cusps and milled nickel silver locking screw, faceplate stamped central circular logo, wear from normal use, in Hardy Selvyt bag, lacking draw string, circa 1908

£200-400

182

A scarce Howell & Co. Howban alloy side casting threadline reel, rear mounted twin composition handles on cross-bar arm below a milled tension wheel, swivelling spring loaded foot (filed) with integral wire armed rolling eye line guide, backplate engraved make and model details, 1940's (see illustration)

£160-260



183

A Bruce & Walker "Specimen Match Hexagraph" 3 piece carbon float rod, 13', crimson silk wraps, sliding reel fitting, stand-off rings, spigot joints, in bag

£250-360

184

A 19th Century brass 3 1/2" loch trolling winch, tapered horn handle on straight crank winding arm with domed iron locking screw, block foot, quadruple raised pillars (two double roller), rear raised check housing and fixed check mechanism, light wear to bronze patina from normal use, circa 1890

£160-260

185

A scarce Hardy St George Multiplier 3 3/8" trout fly reel, reverse tapered ebonite handle on off-set circular drive plate, ribbed brass foot, white agate line guide (no cracks), three screw spring drum latch, milled rim tension screw, interior stamped "D.W. (Denys Ward), only light wear to dark lead finish from normal use, 1930's (see illustration)

£600-900



186

A good Hardy Perfect 3 3/4" salmon fly reel, domed ivory handle, brass foot, strapped rim tension screw with Turk's head locking nut and 1906 calliper spring check mechanism, slightly dished drum with four rim cusps and milled nickel silver locking screw, faceplate stamped central circular logo, reel retains much of the original lead finish, circa 1906

£300-400

187

A scarce Hardy Longstone General Harrison Pattern 5" duralumin sea centre pin reel, solid drum (no perforations) with twin reverse tapered ebonite handles and nickel silver telephone drum latch, ribbed brass foot, Bickerdyke line guide, rim mounted optional check lever and milled tension adjusting screw with rear ivory quadrant weight indicator and spring release latch, a rarely seen model with only 36 being produced in the 5" size between 1929-35 (see illustration)

£450-650



188

A Hardy No.2 Pattern Trade 3 1/2" trout fly reel, contracted, unleaded solid alloy drum with ebonite handle and domed brass locking screw, ribbed brass foot, white agate line guide, milled rim tension screw and Mk.II check mechanism,

interior stamped "T.A.G." (Tommy Armstrong), wear to finish from normal use, 1940's

£180-260

189

A Hardy No.4 Pattern Trade 3 1/2" wide drummed light salmon fly reel, "wartime" black painted finish, drum with ebonite handle, single rod of perforations and nickel silver telephone drum latch, ribbed brass foot, milled rim tension screw and Mk.II check mechanism, only light wear to finish, 1940's

£200-300

190

A Hardy Fortuna 8" big game centre pin reel, twin reverse tapered ebonite handle mounted on brass cross-bar arm above a six point capstan star drag, brass block foot, solid drum with Andreas patent anti-reverse mechanism, single set of rim mounted nickel silver Van Brunt harness lugs, rear optional check lever, backplate stamped make and model details, wear from normal use, 1930's (see illustration)

£700-1000



191

A Hardy Marquis 8/9 fly reel and spare spool, composition handle, alloy foot, rear tension regulator, in zip case, used condition and a Hardy "Ultralite" 2 piece carbon trout fly rod, 9'6", #7, black/grey tipped wraps, screw grip reel fitting, in bag and alloy tube (2)

£120-160

192

A collection of various tackle including a Vision Deep 56 trout fly reel, boxed, a Vision Vipu 4 piece carbon trout fly rod, 9', #5, a McLean folding head landing net, a Wychwood canvas trout bag, various trout fly boxes and flies and various other items (Q)

£130-180

193

A Hardy Perfect 2 7/8" trout fly reel, ebonite handle, ribbed brass foot, white agate line guide (no cracks), milled rim tension screw and Mk.II check mechanism, light wear from normal use, a Hardy canvas and leather trimmed trout bag, a 1957 Hardy Anglers Guide and various other items (Q)

£200-300

194

A scarce early Edward Vom Hofe 4/0 Celebrated Star multiplier saltwater presentation reel and block leather case, ebonite and nickel silver construction with off-set counter-balanced handle, milled rim mounted check disc, off-set pierced foot, triple cage pillars, faceplate engraved presentation details "Prize Awarded to F.O. Herring by Pasque Island Club, 1878", face stamped makers and patent details, case lacking locking strap. The Pasque Island Club was an exclusive club based in Martha's Vineyard Sound

£800-1200

195

A rare early Edward Vom Hofe German Silver 4/0 multiplier reel, solid nickel silver construction, 2:1 ratio full bridged gearing, off-set serpentine counter-balanced ebonite crank handle, pierced off-set foot, triple cage pillars, hinged spindle oil port caps, faceplate stamped makers details and script engraved presentation details "S. Stearns from M.A. Stearns 1872", reel is in overall excellent condition and a rarely seen precursor to the Celebrated Star model, circa 1870 (see illustration)

£1000-1500



196

A fine Freestone Rods Co. (Stephen Dugmore) 2 piece (2 tips) cane brook trout fly rod, 7'6", #3/4, clear silk wraps, polished wood reel seat painted brown trout spot decoration, sliding blued nickel silver reel fitting, agate line butt ring, snake eyes throughout and hayfork tip eyes, blued nickel silver suction ferrules, rod is in unused condition and in original bag and alloy tube

£500-800

197

A fine Gary Marshall "The Patagonian 8" 4 piece (2 tips, 2 upper middle sections) sea-trout fly rod, 8', #8, GR taper, swollen butt, light tan/crimson tipped silk wraps, western style cork handle with polished amboyna wood reel seat, nickel silver screw grip fitting, threaded butt cap and detachable short cork butt extension, agate lined butt ring, snake eyes throughout and hayfork tip eyes, blued nickel silver suction ferrules, slightly heavier built spare tip which will take a #9 line, only very light signs of use, in original cloth bags and alloy tube with wooden plug stopper, originally designed as a powerful rod to quell the very large sea run brown trout of Tierra del Fuego, Patagonia this rod would also make an ideal pike fly rod

£600-900

198

A good Hardy Sea Silex 6" sea centre pin reel, solid alloy drum (no perforations) with twin reverse tapered ebonite handles and nickel silver telephone drum latch, brass block foot, rim mounted ivorine brake lever and three further casting controls, rear brass weight indicator dial, good overall condition, 1930's (see illustration)

£350-550



199

A Hardy Filey 4 ½" sea centre pin reel, solid alloy drum (no perforations), twin reverse tapered ebonite handles and milled brass spindle mounted tension nut, phosphor bronze bearings, brass stanchion foot, (reduced), stamped makers details, small corrosion mark to front rim, circa 1930

£200-300

200

A fine C. Farlow & Co. Ltd. rectangular oak salmon fly reservoir, interior fitted six lift-out paper lined trays each fitted bars of nickel silver spring fly clips and holding a good selection of approximately 270 fully dressed salmon flies, including 151 gut eyed examples, lid interior with inset ivory trade plaque, outer case with recessed white metal carry handle and brass lock, 13" x 10" x 6" overall, excellent condition, circa 1900 (see illustration)

£2500-4500



201

A scarce No.2 Trade Card of Pearsall's Embroidery Silks, the red rexine rectangular fold out three section folio displaying various colour shades of Eastern dyed silks and an extensive collection of approximately 290 wooden bobbins of Pearsall's Stout Floss silks, various colours and shades each with paper label pattern details to bobbin ends (Q)

£300-400

202

A good Allcock's folding rexine trade folio of trout flies, the black rexine folding case opening to reveal six panels displaying seventy wet and dry patterns, mounted on red bordered paper panels and each with printed pattern details, makers and exhibition details, outer cover gilt stamped Stag logo and maker's name, circa 1915 (see illustration)

£200-300



203

An extensive collection of early 20th Century Halford and Skues pattern fly tying hackles ex-A.H. Norris collection, displayed and mounted on 84 printed London Fly Fishers' Club and blank cards comprising many hundreds of individual hackle feathers and 73 envelopes of various body material from the same collection, each in paper envelope with ink content details including, pigs wool, mohair and seal (Q)

£250-450

204

A collection of 19th/early 20th Century fly tying feathers and materials, including the hackle wallet of A.H. Norris holding a good collection of hackles, dubbings and floss along with a good and varied selection of rarer sample feathers including blue chatterer, toucan, florican bustard, cock of the rock, indian crow, bird of paradise et al, three cards of various silks, celluloid coloured strips, contained in four card boxes (Q)

£400-600

205

A scarce Hardy Super Silex Multiplier 3 ¼" bait casting reel, reverse tapered ebonite handle on circular off-set drive plate, ribbed brass foot, shallow cored drum with jewelled spindle bearing and spring release latch, rim mounted ivorine casting trigger, milled tension adjuster and rear ivorine quadrant weight indicator, wear from normal use only, 1930's (see illustration)
£450-650



206

Three various French reed trout fisher's creels, each of flared form with sloping hinged lid and rectangular fish hole, canvas and leather carry straps, 1920's (3)
£130-180

207

A scarce Farlow 1st Model Sextile brass line winder fitted six collapsible slotted brass arms, treen winding handle on waisted crank arm and brass "G" clamp table fitting with brass thumb locking screw and twin drop locking arms, crank winding arm possible replacement, in original rectangular pine case with typed instructions to lid interior, circa 1910 (see illustration)
£250-450



208

A Hardy Sea Silex 5" sea centre pin reel, solid drum (no perforations) with twin reverse tapered ebonite handles and nickel silver telephone drum latch, brass foot, rim mounted ivorine brake handle, optional check lever and two further casting controls, rear plate stamped make and model details, wear from normal use, 1930's
£250-450

209

A Julius Vom Hofe Ocean B 9/0 multiplier big game reel, ebonite and nickel silver construction with counter-balanced off-set crank handle mounted above a six point capstan star drag, twin rim mounted casting controls, pierced foot stamped model details, leather brake pad, rear sliding optional check button and two similar models in 6/0 and 4/0 sizes, all with wear from normal use (3)
£300-500

210

A scarce Hardy Farne Ebona 5 ½" No.1 pattern sea centre pin reel, drum with twin bulbous horn handles on elliptical plates, nickel silver telephone latch, Bickerdyke line guide, nickel silver cruciform stanchion foot, rim mounted ivorine brake lever with Silex No.2 action, backplate and foot stanchion stamped make and model details, good overall condition, circa 1910 (see illustration)
£450-650



211

A Hardy Silex No.2 3 ½" bait casting reel and block leather case, drum with shallow slotted core, twin ivorine handles and three screw spring drum latch, cut-away rim section, brass foot (filed), rim mounted ivorine casting trigger and strapped tension screw, wear from normal use, circa 1915
£200-300

212

A scarce Hardy 1911 line winder, four folding rectangular oak arms with hook and eye latches (lacking one latch) and turned treen winding handle, mounted on chromed brass support and with milled spindle locking nut, rectangular base with patent "W" reel fitting, circa 1920

£160-260

213

A Hardy leather tackle hold-all, the rectangular case with burgundy baize lined interior having lift-out tackle tray and compartmentalised base section, outer case with twin locking straps (one a.f.), brass hasp lock and swing carry handle, lid black stamped previous owners initials, case contains a selection of various fly and bait casting reels by various makers, circa 1920 (see illustration)

£300-400



214

A scarce Nat Uslan "Challenger" 3 piece pentagonal built cane trout fly rod, 8', #5, mid-tan silk wraps, alloy screw grip reel fitting, Perfection butt ring, snake eyes throughout, hayfork tip eyes, nickel silver suction ferrules, no.101951, some small marks to varnish otherwise good, in bag and screw cap alloy tube

£500-800

215

A fine A.L. Walker 3" trout fly reel, right hand wind model with polished alloy rims, counter-balanced "S" scroll handle set within an anti-foul rim, pierced foot, triple nickel silver cage pillars (one roller), fixed click check mechanism, milled rear spindle cap stamped makers details, in original cloth bag, only very light use only (see illustration)

£1000-1500



216

A good Hardy Perfect 3 1/8" trout fly reel, ebonite handle, ribbed brass foot, milled nickel silver rim tension screw and Mk.II check mechanism, reel retains virtually all the original dark lead finish and in Hardy metal edged brown card trade box, 1930's

£250-450

217

A rare Homer L. Jennings "No. 3" 2 piece (2 tips) cane brook trout fly rod, 6'9", rarely seen crimson silk inter-whipped (circa 1986), circa cork handle with polished olive wood reel seat with sliding nickel silver fitting, Shirl Maisey nickel silver suction ferrule, slightly swollen butt, carbide butt ring, snake rings throughout, hayfork tip eyes, very good overall condition, in bag and brass capped alloy tube

£600-900

218

An H.L. Leonard "Duracane" 2 piece (2 tips) impregnated cane trout fly rod, 8'6", #5, green silk wraps, butternut wood reel seat and alloy screw grip fitting, butt cap stamped makers details, circa handle, nickel silver suction ferrule, carbide butt ring, snake eyes throughout, hayfork tip eyes, no. 2332, light use only, in bag and alloy and brass capped tube, circa 1965

£350-550

219

A J.L. Weir & Son 2 piece (2 tips) cane trout fly rod, 8'6", #4/5, light tan/crimson tipped silk wraps, western cork handle with unpolished olive wood seat and alloy screw grip fitting, agate lined butt ring, snake eyes throughout, hayfork tip eyes, nickel silver suction ferrule (re-fitted at some time), ink inscribed previous owners details and PEC-D861.4.9., light use only in bag and alloy tube

£300-500

220

An S.E. Bogdan Trout (5wt) trout fly reel, left hand wind model with black/silver anodised finish, counter-balanced serpentine crank wind handle set within an anti-foul rim, pierced foot, multi-perforated face and drum plate, fixed click check mechanism, rear milled alloy spindle cap and applied rectangular trade plaque, front plate slightly faded, light signs of use (see illustration)

£2000-3000



221

A Hardy Marquis No.2 salmon fly reel, composition handle, ribbed brass foot, two screw drum latch and rear tension adjuster, light use only, in zip case and a Hardy "Salmon Fly" 3 piece Fibalite salmon fly rod, 14', #10, gold/scarlet tipped wraps, screw grip reel fitting, in bag (2)

£130-180

222

A Hardy Marquis No.1 salmon fly reel, composition handle, ribbed brass foot, two screw drum latch and rear tension adjuster, in zip case and a Hardy "Salmon Fly" 3 piece Fibalite salmon fly rod, 12' 6", #9, gold/scarlet tipped wraps, screw grip reel fitting, in bag (2)

£130-180

223

An Abu Ambassadeur 6000 bait casting reel, red finish, grooved rims, single handle, rear optional check button, foot stamped "721202", near new condition, in rexine case and with spares and a Hardy "Fibalite Spinning 8lbs" 2 piece salmon spinning rod, gold/scarlet tipped wraps, screw grip reel fitting, in bag (2)

£100-150

224

An Edward Vom Hofe model 550 Star 1/0 multiplying surf reel and block leather case, ebonite and nickel silver construction with off-set counter-balanced "S" scroll handle, twin rim mounted casting controls, pierced foot stamped model details and date stamp "R 238 (1925), spindle mounted leather brake pad, twin hinged spindle oil port covers, reel with red heightened previous owners initials and block leather "D" case, gilt stamped same, circa 1925

£200-300

225

A rare and unusual Edward Vom Hofe Tobique 5/0 multiplying salmon fly reel and block leather case, ebonite and nickel silver and with 3:1 ratio retrieve (Tobique was usually 2 1/8:1 gearing), alloy counter-balanced serpentine crank handle set within an anti-foul rim, pierced alloy foot stamped model details and date stamp "D 94" (1937), quadruple cage pillars (two double roller), rear spindle mounted seven point graduated tension adjuster and, unusually, with no optional check button fitted to this reel, records show the Tobique was only sold in 1931 without an optional check button, faceplate slightly faded, block leather "D" case stamped previous owners initials, circa 1937 (see illustration)

£1500-2500



226

A Hardy Perfect 2 7/8" trout fly reel, ebonite handle, brass foot, milled rim tension screw and Mk.II check mechanism, only very light wear to dark lead finish, 1940's

£250-350

227

A good Horwood ebonite Loch Tay 5" trolling salmon reel, caged narrow drum with tapered ivory handle, brass bridge foot, quadruple cage pillars, fixed check mechanism, raised faceplate with two screw spindle boss and stamped shield logo, overall excellent condition, circa 1890

£300-400

228

A rare A. Evatt brass folding handle 3 ¼" salmon winch, turned bone handle on straight crank winding arm with milled circular spindle locking disc, cut-away rim handle recess, rivetted block foot, quadruple cage pillars, rear raised check housing and fixed check mechanism, faceplate script engraved makers name and 6 Warwick St address details, good overall condition, circa 1840 (see illustration)

£700-1000



229

A scarce Hardy Sunbeam 2 ¾" trout dry fly reel, "spitfire" finish alloy (possibly Duralumin), exposed drum with ebonite handle, unusual drop bar locking latch, fixed Mk.I check mechanism, Duralumin Bickerdyke line guide and stancheon foot, possibly made for export, circa 1940

£300-400

230

A very rare Farlow Billiken multiplying bait casting reel, alloy construction with 3:1 ratio gearing, off-set tapered ivory handle on counter-balanced arm which disengages the spool for casting when raised and turned, removeable alloy rear plate with six ventilation ports and twin rim locking slots, recessed to house the patent fan casting regulator, nickel silver block foot and triple pillared drum cage, faceplate stamped makers details and rear plate with patent details, 2 ½" diameter, in original fitted pine rectangular case, good overall condition, circa 1915 (see illustration)

£900-1300



231

A Fin-Nor Ahab 810 saltwater/salmon fly reel, gold anodised finish, counter-balanced handle, block foot, push button spool release and rear spindle mounted milled tension adjuster, little used condition, in neoprene pouch

£180-260

232

A Thomas & Thomas "DH1208-4" 4 piece carbon salmon fly rod, 12', #8, blue silk wraps, anodised screw grip reel fitting, new/unused condition, in bag

£150-250

233

A Nautilus S12 salmon/saltwater fly reel, silver anodised finish, right hand wind model, large arbour drum with counter-balanced handle and knurled spool release cap, skeletal cage, rear spindle mounted milled tension adjuster, only very light signs of use, in neoprene pouch (see illustration)
£300-400



234

A Thomas & Thomas "DH1409-5" 5 piece carbon salmon fly rod, 14', #9, blue silk wraps, anodised screw grip reel fitting, as new condition, in bag
£160-260

235

A fine Charlton Signature 8550c saltwater/salmon fly reel, right hand wind model with black anodised finish, counter-balanced rosewood handle, knurled drum release disc, block foot, rear spindle mounted drag adjusting wheel, only very light signs of use and in original cloth pouch (see illustration)
£700-1000



236

A scarce Albert Smith Gordon Greenhill Improved Pike Float, the 3 1/2" cork bodied with bulbous white painted top and wooden spindle peg, see Della Mura J.: Hooked on Floats pg. 189, 1925 and a scarce Allcock "Summers Release" pike bung, the 3 1/4" bulbous cork float with red/brown painted decoration, side mounted brass wire line guides and applied transfer label, circa 1940 (2)
£130-180

237

A scarce "Any Depth" sliding float, 5 3/4" two section green/red painted cork body with hollow celluloid spindle and weighted base, lower body section applied transfer label with pamphlet and white card box, see Della Mura J.: Hooked on Floats pg.341 and a Beltack "Tippit" adjustable 6" float, in original metal capped tube and with pamphlet (2)
£100-150

238

A rare Fishing Gazette Spinner bait, the 3" copper spoon body with silvered underside, head mounted 1 7/8" un-named Gazette brass fanned spinner, head and rear mounted flying treble hooks, circa 1880 (see illustration)
£200-300



239

An early 19th Century carved horn 1 7/8" minnow bait, the fish shaped lure with brown trout painted decoration, rear gut mounted treble hook and loop eye, circa 1840
£130-180

240

A rare Hardy "Sportman's" tackle cabinet, the polished oak cabinet with red baize lined interior fitted to take nine rods, rectangular tackle drawer to base with recessed brass handle below two stepped open reel holding sections, flared dentil cornice, twin glazed

panel door and stepped base, cabinet has been re-baized at some time, so lacking the original name plaque to backboard, otherwise in excellent overall condition, 88" high x 26" wide x 10" deep, illustrated in the 1905 Hardy Angler's Guide, pg. 30 (see illustration)

£1000-1500



241

A Farlow's (retailers) tray top "salmon fly" tea table, rectangular green and gilt lined glazed wooden top with five inset actual classic salmon flies set within recessed circular mounts, raised border and on folding X-frame base, 23 1/2" x 15 1/2"

£120-160

242

An Edwardian mahogany rectangular "mayfly" occasional table, recessed and glazed top decorated with geometrically patterned display of 113 mayfly and trout flies withing silver lined border and seven starburst medallions, cross stretched straight legs, 19" x 12 1/2" x 24", circa 1915

£160-260

243

A stepped oak framed "mayfly" tea tray, similar is style and design to the preceding lot and displaying geometrically patterned actual mayflies within a silver lined border and nine circular medallions, glazed top, twin white metal carrying handles, 18 1/2" x 12 1/2"

£80-120

244

A superb Thomas & Thomas "Montana" 2 piece (2 tips) flamed cane trout fly rod, 8'6", #6, light tan/black tipped silk wraps, black walnut reel seat and nickel silver screw grip fitting, stamped makers details, suction butt cap and 1 5/8" cork extension butt section, western style cork grip, swollen butt, carbide butt ring, snake rings throughout and hayfork tip eyes, blued nickel silver ferrules, ink inscribed model details and no. 5661, rod is in new/unused condition and in original bag and brass capped alloy tube

£1000-1500

245

A fine Thomas & Thomas "Sans Pareil" 2 piece (2 tips) flamed cane brook trout fly rod, 7'6", #3, light tan/black tipped silk wraps, tiger maple wood reel seat, blued nickel silver sliding reel fitting with gun maker hand engraved running acanthus decoration, stamped makers name, cigar shaped 5 1/2" cork handle, swollen butt section, carbide stripping guide, snake rings throughout and hayfork tip eyes, blued nickel silver ferrules, model no.5684, rod is in new/unused condition and in original bag and brass capped alloy tube

£1200-1600

246

A fine Charlton 8350c Configurable trout fly reel, left hand wind, black anodised model multi-perforated 1/5 spool with counter-balanced rosewood handle, push button drum release, block foot and rear spindle mounted ten point tension adjuster, new/unused condition (see illustration)

£500-800



247

A rare 19th Century gilt brass angling presentation pocket barometer of fob watch design with ring chain holder, silvered dial, and reverse script engraved presentation details "Presented to the Dundee Angling Club by Jas. Yeaman Esq. MP, Gained By, R. Gow 1874 and J. Mathewson, 1875, 1876, 1877, in velvet and silk lined fitted black rexine and gilt lined rectangular case

£300-400

.....

248

A tan leather reel hold-all, the attaché style hide case with green baize lined interior fitted ten reel compartments, applied "Hardy" oval brass trade plaque to lid interior (probable later addition), twin brass hasp locks and swing carry handle, circa 1915

£200-300

.....

249

A Hardy New Nottingham 1912 pattern 4" walnut centre pin reel, solid drum with twin tapered horn handle and milled spindle tension nut, Bickerdyke line guide, rim mounted Silex action brake lever, starback foot stamped makers details, good overall condition, circa 1912

£160-260

.....

250

A fine Hardy 1895 Transitional Brass Perfect 4" salmon fly reel, domed bone handle, block foot, pierced seven holes, strapped rim tension screw with early calliper spring check mechanism, open ball race with phosphor bronze bearings, slightly dished drum with two bands of large and small perforations and large milled and waisted recessed spindle locking nut, faceplate stamped central 612 patent details and Rod in Hand trademark, neatly block engraved previous owners initials, reel retains much of the original dark bronze patina, circa 1895 (see illustration)

£3000-4000



251

A scarce Hardy Perfect 4 1/2" salmon fly reel, "Eunuch" model (no ball bearings), domed ivory handle, brass foot, strapped rim tension screw with Turks head locking nut and 1912 heavy duty check mechanism, slightly dished drum with milled nickel silver locking screw, drum presently seized on spindle, faceplate stamped central circular logo, light wear from normal use only, circa 1915

£300-400

.....

252

A Hardy Raised Pillar 2 1/2" brass trout winch, domed horn handle on waisted straight crank winding arm set within an anti-foul rim, bridge foot, raised triple drum pillars, fixed check mechanism, faceplate stamped enclosed oval logo, reel retains much of the original bronze patina, circa 1895

£300-400

.....

253

A scarce Hardy Perfect Houghton Dry Fly 2 5/8" wide drummed trout fly reel, domed ivory handle on milled brass cup, brass foot, strapped rim tension screw and early calliper spring check mechanism, solid drum (no perforations) with milled nickel silver drum locking nut, faceplate stamped open oval and straight line logos, very small, fine hairline crack to faceplate rim, otherwise light wear from normal use only, circa 1900 (see illustration)

£450-650



254

A Hardy Perfect 4" salmon fly reel, ebonite handle, ribbed brass foot, milled rim tension screw and Mk.II check mechanism, milled nickel silver drum locking screw, wear to enamel finish from normal use, 1950's

£180-260

255

A very rare Hardy Ferris 3 3/4" light salmon fly reel, drum with single band of perforation to outer faceplate, ebonite handle, three screw spring drum latch, brass foot, revolving nickel silver line guide, milled rim tension screw and Mk.II check mechanism, interior stamped "J", a very rarely seen model of which factory records show 57 being produced between 1925-32, see Drewett J.: *Hardy Brothers, The Masters...* pg. 196, circa 1930 (see illustration)

£2000-3000



256

A good Hardy "Marvel" 3 piece (2 tips) cane brook trout fly rod, 7'6", #4, green/gold tipped silk wraps, sliding alloy reel fitting, suction joints, 1961, light use only, in bag and alloy tube

£300-500

257

A good Hardy "Perfection Roach" 2 piece cane float rod, 11', crimson silk inter-whipped, sliding alloy reel fittings, stand-off rings, suction ferrule, 1957, only light use, in bag

£150-250

258

A good Allcock Aerial model 7950-T10 4" wide drummed centre pin reel, caged and six spoked drum with twin stepped xylonite handles, perforated front flange (eight holes) and twin release regulator forks, brass stancheon foot, rim mounted optional check lever and bar

spring check mechanism, backplate stamped Stag trademark, only very light signs of use, circa 1940 (see illustration)

£350-550



259

A scarce Hardy Silex Major 4 1/2" wide drummed left hand wind bait casting reel, shallow cored drum with twin ebonite handles and spring release latch, rim mounted brass auxiliary pressure brake, ribbed brass foot, rim mounted ivory casting trigger and milled nickel silver regulator nut with rear ivory quadrant weight indicator, additional rear nickel silver tension adjuster with ivory dial, backplate stamped make and model details, light wear from normal use only, circa 1930

£300-500

260

A rare Ustonson brass 3 1/2" brass salmon winch, turned bone handle on straight crank winding arm with milled spindle locking nut, cut away rim handle recess, rivetted block foot pierced to take leather pad, triple drum pillars, raised rear check housing (lacking one steel securing screw), faceplate script engraved "Ustonson, Maker to the Queen, Temple Bar, London", drum holding an early 19th Century horsehair and flax line, circa 1840 (see illustration)

£2000-4000



261

A scarce Hardy Longstone 1921 model 4" sea centre pin reel, alloy backed drum with seasoned walnut faceplate, twin ebonite handles and milled nickel silver spindle tension nut, Bickerdyke line guide, alloy stanchion foot, rim mounted optional check lever and bar spring check mechanism, wear from normal use and in Hardy Selvyt bag, a rarely seen model made 1921 only

£200-400

262

A rare Malloch Multiplier 4" alloy side casing reel, off-set ivory handle on waisted brass crank winding arm with sliding optional direct drive/multiplying action lever, swivelling brass foot with integral line guide and spring release latch, rim mounted optional check lever and reversible drum, faceplate stamped oval logo, overall very good condition with only light wear to finish from normal use only, circa 1920 (see illustration)

£400-600



263

A fine Malloch Sun & Planet 4" brass and ebonite salmon fly reel and block leather case, faceted treen handle with patent sun & planet anti-reverse gearing, twin German silver rims, bridge foot, quadruple cage pillars, fixed check mechanism, faceplate stamped oval logo, retailers details (Pape of Newcastle) and neatly block engraved previous owners name, reel retains virtually all the original bronze patina to faceplate, two scratches to ebonite backplate only, otherwise reel is in excellent overall condition, circa 1900

£300-400

264

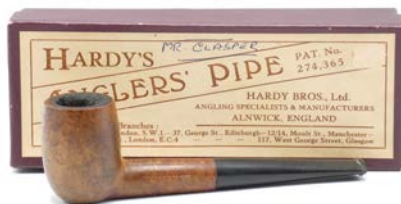
An unusual 19th Century Nottingham style 3" mahogany centre pin reel, solid drum (no perforations) with recessed spindle well and iron locking nut, "batting" drum i.e. no handles, three rim mounted casting controls; optional check lever with brass strapped tension adjusting wheel and further brass pressure brake lever with ebonite brake pad, brass starback foot with spearpoint finials, a most unusual example dating from circa 1890

£400-600

265

A rare Hardy Angler's and Sportsman's Pipe and card box, burr walnut bowl with tapered ebonite mouthpiece, bowl stem stamped size no. "2" and make and model details, 5 1/4" in length, original burgundy rectangular card box with printed label to lid, detailing patent no. 274,365, previous owners name inked to lid, 1930's (see illustration)

£300-400



266

A scarce Hardy Pipe Reamer, the nickel silver gadget of tapered key form with turned double edged blades, one serrated, one smooth, head pierced circular hole and stamped makers details, 2 1/2" long, designed for use with the above lot, 1930's

£130-180

267

A scarce Hardy alumin Pipe Reamer of tapered conical form, milled grip, reaming point with recessed steel bowl cleaning blade, screw cap holding an internal steel spike for clearing mouthpiece, main body stamped makers details, 3 1/2" long, circa 1940

£200-300

268

A scarce C. Farlow & Co. rectangular oak salmon fly reservoir, interior fitted six lift-out wooden trays each fitted bars of nickel silver spring fly clips and holding a very good selection of 207 fully dressed salmon flies, mainly large examples, lid interior with applied rectangular ivorine trade plaque, recessed white metal carrying handle, fine hairline crack to lid otherwise good overall condition, 13 ½" x 10 ¼" x 5 ½", circa 1890 (see illustration)

£1400-1800



269

A J. Forrest black japanned salmon fly reservoir, the rectangular cabinet with fall front door opening to reveal nine cream painted sliding trays (one lacking), each with painted hook size tab and fitted bars of nickel silver spring fly clips, holding a selection of 116 mainly fully dressed salmon flies including some gut eyed examples, six flies being on a Farlow's printed card with hook gauge to rear, cork lined lid interior with applied oval nickel silver trade plaque, sliding locking pin latch and swing carry handle, 1920's

£250-450

270

A rare solid nickel silver Ellem Club 2 ¾" presentation trout fly winch, turned bone handle on straight waisted crank winding arm with domed spindle locking screw, rivetted bridge foot (re-shaped at one end), triple cage pillars, backplate block engraved "Ellem Fishing Club, Presidents Rod and faceplate gothic script engraved "B.C. Trotter, Grantstonn(?), 11th May 1860", small indent to rear rim beside foot, otherwise good overall condition, circa 1860 (see illustration)

£1000-1500



271

A rare Hiram Hawes 3 piece (2) tips cane trout fly rod, 8', suitable for #4 line, crimson silk inter-whipped, cork handle, butternut wood reel seat with sliding nickel silver fitting, milled butt cap stamped makers details, nickel silver ferrules, replacement agate line butt ring and hayfork tip eyes, original snake eyes throughout, rod has had routine maintenance and touching up to the varnish as you would expect for a rod of this age, a rarely seen example, in original cloth bag and screw cap alloy tube, stamped makers details, 1930's

£1400-1800

272

A good Carpenter Bros. 2 piece cane trout fly rod, 8'9", #4, light tan silk wraps, matt oil finish, western style full cork handle with sliding white metal reel fitting, truncated nickel silver ferrule, full open bridge butt ring, titanium snake eyes, rod is in as new condition, in bag and alloy tube, circa 1915

£500-800

273

A fine A.L. Walker TR1 2 ½" trout fly reel, right hand wind model of ebonite and alloy construction, counter-balanced serpentine crank handle set within an anti-foul rim, pierced foot, lightly engraved "206", triple nickel silver cage pillars (one roller), rear off-set graduated tension adjuster and milled spindle cap, stamped "A.L.W", excellent overall condition and in original cloth pouch (see illustration)
£1000-1500



274

An Edwards- Bristol "F-18" 3 piece (2 tips) flamed cane trout fly rod, 8', #5, tan/gold tipped silk wraps, butternut wooden reel seat with sliding, nickel silver fitting, agate lined butt ring, hayfork tip eyes and snake rings throughout, Edwards style yellow script details to butt section, on original blue velvet covered wooden former and in original bag, probably a Bill or Jean Edwards built example, 1940's
£200-300

275

A rare Hardy 1931 Model multiplying tournament casting reel, 3:1 ratio gearing, ebonite handle on off-set knurled rim circular drive plate, which revolves to disengage the pinion gear on the lightweight alloy drum for casting, ribbed brass foot, rear raised brass spindle boss with tension adjusting screw and outer nickel silver locking nut, winding plate stamped model details, a rarely seen example first offered for sale in 1931 and appearing again in the 1934 catalogue only, See Drewett J.: *Hardy Brothers....*pg. 507, light wear from normal use and in Hardy Selvyt reel bag, circa 1931(see illustration)
£1500-2500



276

A scarce Wyer Frères 5" ebonite combination salmon fly reel, brass backed ebonite drum with twin domed horn handles, four screw brass spring release latch, circular plate stamped "Wyer Frères, Paris", annular line guide, unusually fitted flush to winding plate rather than recessed, rear German silver rim, brass fishtail starback foot, neatly reduced to one end, rear sliding optional check button with calliper spring check mechanism, a previously unseen model, circa 1900
£300-500

277

A fine Hardy Brass Faced Perfect 4 ¼" salmon fly reel and block leather case, domed ivory handle, pierced brass foot, nickel silver line guide, strapped rim tension screw with Turk's head locking nut and 1906 calliper spring check mechanism, slightly dished drum with four rim cusps and milled nickel silver locking screw, faceplate stamped Rod in Hand trade mark and straight line logo, reel retains virtually all the bronze patina and dark lead finish and is in excellent overall condition, locking strap on case a.f., circa 1906 (see illustration)
£1000-1500



278

A rare early 19th Century un-named Pearl Minnow 3" bait, fish shaped mother o'pearl lure with loop eye and twin brass head spinning vanes and pierced to take two gimp traced side and rear mounted flying treble hooks, a rarely seen example, circa 1830-40 (see illustration)
£600-900



279

A scarce Westley Richards Rolo 4" bait casting reel, spare spool and fitted double block leather case, reel with caged drum, twin ivory handles, spring release latch, cut-away rim section, brass bridge foot, rim mounted ivory casting trigger, strapped tension screw and milled optional check disc, interior stamped "D.664" (Walter Dingley) and faceplate script engraved previous owners name, rarely seen Waud model (for use under the rod), see Westley Richards catalogue, 1925 pg. 115
£300-400

280

A rare Coxon Aerial model 4108A-T2 3 1/2" four spoke centre pin reel, caged drum with twin tapered horn handles, ebonite flanges and twin release/regulator forks, mahogany backplate with brass starback foot, sliding optional check button and calliper spring check mechanism, light signs of wear from normal use only, circa 1910 (see illustration)
£600-900



281

An Illingworth No.3 threadline casting reel, exposed bronze gearing, stepped ebonite handle, finger pick-up line guide, spool with graduated tension adjuster, in original rexine case, circa 1915 and a similar Illingworth No.2 threadline casting reel, lacking ebonite handle knob, in original rexine case, circa 1910 (2)
£160-260

282

An unusual Forrest of Kelso mahogany salmon line drier, in rectangular mahogany case with sliding lid and fitted interior holding a collapsible four arm winder with twin folding supports, inter-locking arms and steel spindle with milled and threaded locking nuts to each end, lid interior with applied paper trade label, 21 1/4" x 7" x 2 3/4", circa 1910
£140-180

283

A Hardy Practical line drier, rectangular mahogany base, ebonite winding handle, four adjustable alloy arms on folding support and nickel silver thumb screw locking bracket, base with brass patent Iron Arm winch fitting and applied oval nickel silver trade plaque, circa 1925 (see illustration)
£160-260



284

An unusual mahogany fly/lure cabinet, the rectangular case with hinged lid and fall front and an interior fitted three sections of compartmentalised fly/lure holders, each with six sliding bamboo lids, one removable, one to base and one to lid interior, holding a small selection of various salmon and trout flies and lures, outer case with twin wrap around leather securing straps, brass lock and swing carry handle, 11" x 7 1/2" x 4 1/2", circa 1910
£150-250

285

A Hardy Longstone Ebona 5 ¼" sea centre pin reel, solid drum with twin tapered horn handles and milled nickel silver spindle mounted tension nut, Bickerdyke line guide, fixed check mechanism, brass foot with nickel silver starback stanchion, stamped oval logo and backplate stamped model details, good overall condition, circa 1910 (see illustration)
£300-500



286

A good S.E. Bogdan Small Trout 3wt "Baby Trout" fly reel, left hand wind model with black/champagne anodised finish, counter-balanced "S" scroll handle, perforated face and front drum plate, pierced foot, fixed click check mechanism, milled rear spindle cap and applied rectangular makers plaque, light sign of use only and in suede pouch (see illustration)
£1800-2600



287

A good Abel No.4.5 saltwater/salmon fly reel, green/black abstract anodised finish, multi-perforated drum with counter-balanced wooden handle, block foot, numbered "1016", backplate with ventilation ports and spindle mounted milled tension adjusting wheel, light use only
£250-450

288

A rare 19th Century brass gut twisting engine, tapered cow horn handle on curved crank winding arm operating a raised cogged wheel which drives the flyer gears, housed between two 2 ½" diameter circular brass plates, triple iron pick-up flyers, tapered and threaded table screw fitting, good overall condition and a rarely seen model, circa 1860 (see illustration)
£300-400



289

An unusual Kentucky style large brass 4 ¼" multiplier sea/big game reel, 4:1 ratio gearing, off-set "S" scroll crank handle with perspex grips (one lacking), faceplate with milled tension regulating screw, rear sliding optional check button and pillar mounted anti-backlash mechanism, a previously unseen model, circa 1940
£350-550

290

A very rare C. Farlow & Co. Ltd. "Alten" 6" alloy salmon fly reel, lipped faceplate fitted single tapered xylonite handle and milled brass spindle locking nut, brass block foot, quadruple integral cage pillars, internal counter-balance to inside of winding plate, twin bar spring check springs, rear plate with two raised brass disc tension adjusters and fitted with both journal and thrust bearings, plate also with two cut-away lozenge shaped finger braking ports, faceplate stamped Holdfast logo and makers details, a very rarely seen model, this example differs from the catalogue illustration in that it has only a single handle, rather than the twin handles as shown in the Farlow 92nd edition catalogue, possibly an early pre-production prototype model or made to special order, wear to lead finish from normal use, circa 1930 (see illustration)
£2500-3500



291

An unusual multi-perforated 7" brass narrow drummed sea centre pin reel, caged drum with twin bulbous cow horn handles and milled spindle locking nut, Bickerdyke line guide, foot mounted rim pressure brake lever, starback stancheon foot with sliding optional check button and calliper spring check mechanism, possibly by either Heaton's or Slater, circa 1920

£250-350

292

An Augermatic fixed spool threadline casting reel, green stove enamelled finish, closed face drum with polished alloy domed cover, full chromed line guide, foot mounted spring operated casting lever and green composition handle, 1940's

£200-300

293

A very rare 18th Century steamed leather creel of gently sloping, flared form, brass hinged lid with heart shaped fish hole and two further diamond shaped panels with red painted heart motif decoration, cream painted interior, curved back panel with two rectangular holes to take shoulder strap, lacking leather lid locking tab, circa 1780 (see illustration)

£3000-4000



294

A good C. Farlow & Co. oak salmon fly reservoir and leather case, rectangular reservoir fitted six paper lined lift-out trays, fitted bars of nickel silver spring fly clips and holding a very good selection of 289 fully dressed salmon flies including large examples and some double irons, cabinet with green baize lined lid interior, brass lock and recessed white metal carry handle, outer hide case with brass hasp lock, twin securing straps (one a.f) and swing carry handle, stamped makers details and black stamped previous owners initials, reservoir dimensions 13" x 10" x 6", circa 1895 (see illustration)

£2500-4500



295

A scarce Hardy Perfect 4" Silent Check salmon fly reel, ebonite handle, ribbed brass foot, milled nickel silver rim tension screw and patent silent pressure brake mechanism, drum with milled nickel silver locking screw, light wear to finish from normal use only and a rarely seen model, circa 1930

£450-650

296

A rare Hardy Special Perfect 3 ¼" trout fly reel, unleaded faceplate on raised check housing and with ebonite handle, ribbed alloy foot, milled nickel silver rim tension screw and Mk.II check mechanism, only very light wear to leaded finish, 1930's (see illustration)
£1400-1800



297

A Hardy Brass Faced Perfect 4" salmon fly reel, domed ivory handle, brass foot, strapped rim tension screw with Turk's head locking nut and late 1906 calliper spring check mechanism, drum with four rims cusps and milled nickel silver locking screw, faceplate stamped Rod in Hand trademark and straight line logo, wear from normal use and some light pitting to face rim, circa 1906
£400-600

298

A rare Hardy St George Silent Check 3 ¾" trout fly reel, spare spool and double block leather reel case, reel with large arbour drum, ebonite handle, ribbed brass foot, three screw spring drum latch, white agate line guide (no cracks), nickel silver milled rim tension screw and patent silent pressure brake mechanism, light wear to lead finish from normal use, spare spool housed within a further circular lidded block case and double case with burgundy velvet lined interior and strap lock, circa 1930 (see illustration)
£700-1000



299

A fine Hardy "The Fly" 3 ¾" salmon fly reel, "spitfire" finish alloy model with ebonite handle, ribbed brass foot, nickel silver telephone drum latch, fixed Mk.II check mechanism, interior stamped "J.S." (Jimmy Smith), excellent overall condition, 1940's
£300-400

300

The Hardy "experimental" New Brunswick/Cascapedia 4/0 direct drive salmon fly reel, the 4 ¼" diameter reel with ebonite end plates, ebonite handle on counter-balanced serpentine shaped crank winding arm set within an anti-foul rim, nickel silver bound rims, Duralumin alloy drum, triple nickel silver cage pillars, ribbed brass bridge foot, stamped to one side "Patent no. 272400", backplate with raised bronze spindle boss and nickel silver dished optional check lever, the reel has an overall ageing to it as you would expect, with some fading to the ebonite plates and discolouration to the metal work, in Hardy metal edged brown card box. Factory records show only two models of the New Brunswick direct drive Cascapedia reel ever having been made, one in 3/0 and one in 4/0 sizes, the whereabouts of the production 4/0 are known, as it presently resides in a private collection. This pre-production experimental model is clearly an early attempt by Hardy's to consider a direct drive version of the Cascapedia multiplying model, which was introduced commercially in 1932, the lack of tension regulating mechanism, double roller pillars and

use of the “standard” ribbed brass foot are indicative of this being an exceptionally rare, unique, early concept example of the 1935 New Brunswick which, having sold only one of each model, Hardy’s clearly decided not to launch into full production, one suspects due to lack of interest from buyers. The whereabouts of the 3/0 production model remain a mystery... (see illustration)

£12000-16000



Cased fish, Trophies & Art

301

A scarce Rainbow Trout mounted by J. Cooper & Sons, in naturalistic riverbed setting within a gilt lined and bow fronted case, blue painted backboard with applied Radnor St. trade label to top left corner, no legend but paper note attached to back of case noting; Trout at Rickmansworth c. 1921 by George Palmer Smedley, 29” wide (see illustration)

£500-800



302

A Roach by J. Cooper & Sons mounted in naturalistic setting within a gilt lined and bow fronted case, blue painted backboard with hand-written legend plaque “Taken at Halliford, Sept. 21st 1864, Wt. 1lb 10ozs”, Radnor St. trade label to top right corner, 19” wide

£350-550

303

A rare J. Cooper & Sons mounted Eel, set amongst aquatic vegetation within a gilt lined and bow front case, internal legend plaque “Eel caught by D. Kelley at Trench Pool, 6th July 1959, Weight 4lbs 3ozs 5drms.”, graduated green painted backboard, 42” wide (see illustration)

£800-1200



304

John Searl: Still life study of a Perch, lain on a grassy bank with roach live bait, net, rod and Mitchell 300 reel, watercolour and gouache, signed, framed and glazed, gilt edged card mount, image 15” x 21 ¾”

£300-400

305

A fine case of five Brown Trout by J. Cooper & Sons, mounted by W.B. Griggs, displayed within a naturalistic river bed setting in gilt lined, bow fronted case, gilt inscribed “Trout, Caught by E.C. Pedley, April & May 1946”, green painted backboard, paper Bath Rd. trade label to right hand lid interior, 28 ¼” wide (see illustration)

£1500-2500



306

H. Davis: Pike and Perch attacking Roach fry in weeded riverbed setting, watercolour, signed framed and glazed, image 6 ½” x 13 ½”

£150-250

307

A rare Golden Tench by J. Cooper & Sons, set amongst aquatic vegetation within a wrap-around gilt lined case, blue painted backboard with applied paper legend plaque "Golden Tench, Caught by J. Wood at Carburton, Aug. 2nd 1913, Weight 3 ½lbs., Portland AS, Creswell", Radnor St. trade label to top left corner, 25" wide (see illustration)
£700-1000



308

J. Harper: Still life study of Perch, Trout and Tench in wooded bankside setting, signed to bottom right corner "J. Harper, Wednesbury, 1824, unframed, 13 ½" x 18"
£200-300

309

A scarce Roach mounted by W.F. Homer and set within a gilt lined "coffin" shaped picture showcase, gilt inscribed "Roach, 1 ¼ lbs., Caught at "Windsor" by E. Campbell, Aug. 1915", green/grey faded backboard painted reed decoration, 19" wide (See illustration)
£600-900



310

A rare Fochaber's carved wooden Pike, the naturalistically painted half block model with relief fins and mounted on stepped edge oak backboard, white painted legend "Pike, Caught Spinning by G.W. Pope, September 1897", backboard with (later) applied Hardy Bros. Ltd. ivory trade plaque, 47 ½" wide (see illustration)
£4500-6500



311

A Royal Doulton Izaak Waltonware milk jug of flared form, decorated 17th Century gentleman anglers withing a running tree border, interior rim with printed motto "None do here, use to swear oaths do fray, fish away", signed Noke, 7 ¼" high and another similar smaller milk jug, pinched spout, running verse and tree borders, 5" high (2)
£80-120

312

Three items of Royal Doulton Izaak Waltonware, a tapered cream jug, 5 ½" high, a circular teapot stand, 6" diam. and a shouldered vase (restored), 6" high, each decorated with 17th Century gentleman anglers within borders of trees and verse, all signed Noke (3)
£70-100

313

H.L. Rolfe: Hooked Salmon set within a rocky riverscape, oil on canvas signed and indistinctly dated, in gilt frame, image 11 ¾" x 17 ¾" (see illustration)
£1300-1800



314

J.M. Ince: Still life study of three Brown Trout in wooded river landscape, oil on board, verso pasted detail panel, gilt framed, image 15 ½" x 19 ½"
£200-300

315

A good P.D. Malloch plaster cast of a Tay Salmon, the naturalistically painted three quarter block fish mounted on graduated grey/blue backboard with fly of capture to lower right corner and painted legend "Salmon 23lbs., Caught by Major M. Radcliffe, Lower Scone, River Tay, 9th February 1924", makers name to top left corner and in mahogany framed barrel showcase (see illustration)
£2000-3000



316

A fine J. Cooper & Sons Barbel mounted by Len Griggs and set amongst aquatic vegetation within a gilt lined and bow fronted showcase, gilt inscribed "Barbel 7lbs. 4 1/2ozs., Caught by R. Longthorn at Ulleskelf, 12th October 1952", grey/green graduated backboard, paper Bath Rd. trade label applied to top right lid interior, 29 1/2" wide (see illustration)
£900-1300



317

A Grayling by W.F. Homer mounted in naturalistic aquatic setting within a gilt lined and bow fronted show case, gilt inscribed "Grayling 1lb. 5 1/2ozs., Caught by H. Simner at "Hampton Bishop", river Wye, 8 Dec. 1932", green backboard painted reed decoration and with applied paper trade label to top right corner, 21" wide (see illustration)
£600-900



318

A. Roland Knight: Three Brown Trout rising to flies in a reeded riverscape, oil on canvas, signed, gilt slipped oak frame, image 15 1/4" x 23 1/2"
£400-600

319

A good Fochaber's carved wooden Norwegian Salmon the naturalistically painted half block fish with relief fins and mounted on rectangular chamfered mahogany backboard with fly of capture attached to top left corner and gilt painted legend "Killed by Christian H.J. Head, July 8th 1909, Vigeland, Foss Pool, Torrisdal River, Norway, Weight 26lbs, Length 41 1/2 ins., Girth 23 ins.", verso black stenciled C. Farlow & Co Ltd. details, very small section of pelvic fin missing, 48" wide (see illustration)
£3500-5500



320

A fine J. Cooper & Sons Perch mounted by W.B. Griggs set amongst aquatic vegetation within a gilt lined and bow fronted case, gilt inscribed "Perch, 3lbs. 12ozs., Caught at Croxby Pond by Eric Peake, 23rd Sept. 1944" graduated grey/green backboard with painted reed decoration and applied Bath Rd. trade label to top left corner, a rarely seen wartime example, 22" wide (see illustration)
£600-900



321

A Chub by J. Cooper & Sons, mounted amongst aquatic vegetation with a bow fronted showcase, blue painted backboard with painted reed decoration, applied Radnor St. trade label to top left lid interior, case restored at some time, 23" wide
£350-550

322

A fine sterling silver Chertsey Angling Association trophy cup, the twin handled, lidded urn shaped cup profusely engraved with angling scenes and running fish and acanthus border panels, twin scrolled handles each with fish application and fluted lid with angler finial, cartouche panels and shoulder engraved winners details of the "Diamond Jubilee Challenge Cup" dating from 1897 to 1982, hallmarked Sheffield 1896 and makers mark for John Round & Son Ltd., weight 714 grams, 14" high (see illustration)
£500-700



323

An Avon Barbel by W.F. Homer mounted in a naturalistic riverbed setting within a gilt lined and bow fronted case, gilt inscribed "~ Barbel, Wgt. 10lbs. 2ozs. 6drms. ~ Caught in the "Parlour Pool" River Avon, Christchurch, 14th October 1929 by Mr. A. Reece-Jones", blue backboard with applied Forest Gate ivory trade plaque to lower left corner, 38" wide (see illustration)
£700-1000



324

David Hughes: cold cast bronze bust of Izaak Walton, glass eyes, mounted on turned wooden socle, base with applied hand-written label "This sculpture is the first casting taken from the mould. From which the edition will be cast, marked M.C., it was sold to Harry Edwards, a friend of the artist on 1/9/93, rear of shoulder stamped limited edition and sculptures details, 10" high and another cold cast bronze sculpture by the David Hughes of a seated angler with rod and open fly box (2)
£200-300

325

A Fochaber's carved wooden Rainbow Trout the naturalistically painted half block wooden fish with relief fins, mounted on rectangular chamfered and stained pine backboard with painted legend to bottom left "Rainbow Trout, Caught by G. Fothergill, May 1922" and "Kennet 5 1/2lbs." to bottom right, verso black stenciled C. Farlow details, 27 1/2" wide (see illustration)
£2500-3500



326

The Leap, mezzotint of a hooked leaping salmon, after A. Roland Knight, oak framed, titled mount, image 8" x 11 ¼"

£60-90

327

A fine J. Cooper & Sons Chub mounted by W.B. Griggs, set amongst aquatic vegetation within a gilt lined and bow fronted case, gilt inscribed "Chub, 5lbs., Caught by S. Walker at Ellenthorpe, 23rd Feb. 1938", grey/green graduated backboard mounted with hook and trace to top left corner and Radnor St. trade label to top right, 26 ¼" wide (see illustration)

£700-1000



328

A rare Fochaber's carved wooden Char the naturalistically painted half block fish with relief fins, mounted on chamfered mahogany board with cream painted legend "Caught 25 May 1910, Loch-An-Seilach Gaick", verso black stenciled C. Farlow & Co. Ltd. details, 13 ¾" wide, see lot below for actual skin mount of this specimen (see illustration)

£2000-3000



329

A P.D. Malloch mounted Char, being the actual specimen fish to the preceding lot, set within a gilt framed picture showcase, blue painted backboard with applied printed legend plaque "Caught on 25th May 1910 by Mrs. Wolfenden in Loch-an-Seilich, Gaick" and with red paper trade label to top right corner, 15 ½" wide

£300-400

330

A rare Spurdog Shark mounted by J. Cooper & Sons mounted in a naturalistic seabed setting within a gilt lined and bow fronted case, gilt inscribed "Warrington Anglers Association, Caught in Scottish Waters, 1904", blue painted backboard with applied Radnor St. trade label to top right corner, see Williams B.: *The Domesday Book of English Fish Taxidermists* pg.601, 38 ¼" wide (see illustration)

£2000-3000



331

A mounted Brown Trout head by Edw. Gerrard & Sons, oak shield shaped plaque with applied rectangular ivory legend plate "'Harold", River Dwyrhyd, 4th July 1957", verso paper trade label and an un-named mounted Pike head on ebonised wooden shield plaque (2)

£140-180

332

A pair of Perch mounted by Fred Sanders in a naturalistic aquatic setting within a gilt lined and bow front case, green painted back board with hand-written legend plaque "Caught Sept. 10th 1904, Weight 4lbs and 4 ¼lbs.", although this case does not bear a makers label, the hand writing on the plaque is matching that as illustrated in Williams B.: *The Domesday Book of English Fish Taxidermists* pg.206 and in which Barry Williams gives mention of Fred Sanders having mounted three perch of 4lbs in 1904 (pg. 205), 38 ¾" wide (see illustration)

£700-1000



333

A fine Carp by W.B. Griggs mounted for J. Cooper & Sons, in naturalistic lakebed setting within a gilt lined and bow front display case, gilt inscribed "Carp 9lbs, 12ozs., Caught by W.A. Dunn at E. Clandon, 22nd Oct. 1939", grey/green graduated backboard with applied Bath Rd. Trade label to top right corner, 31" wide (see illustration)
£700-1000



334

A pair of Roach by W.F. Homer set amongst aquatic vegetation within a gilt lined and bow fronted display case, gilt inscribed "Roach 2lbs 4ozs, ~ 2lbs 9ozs, Caught by B.H. Cranmer, at Chislet, Kentish Stour, 6/3/38", green backboard with painted reed decoration and with applied 135 Woodgrange Rd. trade label, 27" wide (see illustration)
£600-900



335

A good Pike by J. Cooper & Sons, mounted in naturalistic setting within a gilt lined and bow fronted case, gilt inscribed "Pike, Caught by G. Roberts at Ross-on-Wye, Nov. 18th 1928, Weight 27 ½lbs." blue painted backboard with applied Radnor St. trade label to top left corner, 49" wide (see illustration)
£700-1000



336

Bob Hines: twenty two black and white proof bookplates illustrating various game, sea and coarse fish species set in natural environments including marlin, tuna, crappie, walleye, pike, catfish, brook trout, salmon, grayling, lake trout et al, each in card mount with pencil species detail to verso, image 13" x 9". Bob Hines (1912-94) was one of the most renowned American wildlife artists of the 20th Century, he illustrated several major books and pamphlets and created the 1946 Federal Duck Stamp, we understand this set of bookplates were produced for the Remington Gun Co. to celebrate their 200th (1776-1976) Anniversary (22)
£400-600

337

H.L. Rolfe: Still life study of game fish, Salmon and Brown Trout lain within a landing net in a rocky river landscape, oil on canvas, signed and dated 1866, in heavy gilt slipped gesso frame, canvas 19 ½" x 29 ½" (see illustration)
£3000-4000



338

H.L. Rolfe: Still life study of Salmon and Brown Trout lain upon a rock within a rocky river landscape with classic salmon fly to foreground, oil on canvas, signed and dated 1861, in gilt slipped gesso frame, canvas 17 ½" x 29 ½" (see illustration)
£2500-4500



Wulff, Surface Stonefly, White Wulff and Prefontaine, marbled end papers, fine blue cf. bdg., ribbed spine with gilt title and salmon emblems and sold with a rarely seen watercolour by Lee Wulff of a Leaping Salmon in river landscape, signed, in gilt slipped recessed mount and gilt frame, image 21" x 13 1/2" (see illustration)

£2000-4000



339

A Royal Doulton Izaak Waltonware fruit bowl, decorated with 17th century gentleman anglers and running tree border, further running border of verse to rim interior, signed Noke, 9" diameter and a similar 10" Royal Doulton Izaak Waltonware fruit bowl decorated 17th Century gentleman anglers, signed Noke (2)

£100-150

340

A Fochaber's carved wooden 46 1/2lbs Wye Salmon, the naturalistically painted half block fish with relief fins, mounted on rectangular chamfered stained pine backboard with white painted legend "46 1/2lbs, Caught by John Hargreaves in Strong 'Un Pool, Pennoxstone Court Water on the Wye, March 8th 1924, Scale reading shows this fish to be a very typical 6 year old, very large, spring maiden fish", 57" wide (see illustration)

£4000-6000



342

Zane Grey: three b/w photographs; world record Tiger Shark, 1036lbs, 1937, Great White Shark, 1935, Gray (sic) Nurse Shark, 350-500lbs, April 1937, verso annotated and signed Zane Grey, Field & Stream magazine copyright stamped, a further b/w photograph of R.C. Grey with his record Sailfish, 135lbs, 1927, five further vintage b/w photographs of notable big game fish including F. Alfred Kenney's world record 851lbs blue fin tuna, a small collection of other angling related ephemera and four big game related vols: Zane Grey: Tales of Fishes, 1919 and An American Angler in Australia, 1937, L. Mitchell-Henry: Tunny Fishing, 1934 and F.A. Mitchell Hedges: Battles with Giant Fish, 1925 (Q)

£300-400

Books & Catalogues

341

Lee Wulff: The Atlantic Salmon, 1989, signed ltd. ed. 27/105, pub. Angler's & Shooter's Press, col. and b/w photo plts., b/w illust. throughout text, blue clo. bdg., bound with five actual specimen flies tied by the author and box mounted to inside front cover, patterns: Royal Wulff, Grey

343

Drewett J.: Hardy Brothers, the Master, the Men and Their Reels, 1998, ltd. ed. 49/350, tipped in authors signature plt., col. photo. illust. throughout text, full green morr. bdg., g.e., gilt dec spine and Rod in Hand emblem to cover board, in slip case
£250-450

344

Peard W.: A Year of Liberty or Salmon Angling in Ireland, 1867, 1st ed. 300pp, hf. burgundy morr. bdg., gilt top, marbled boards
£130-180

345

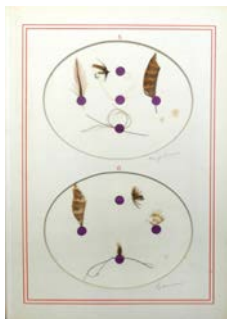
Turner G: Fishing tackle – A Collector's Guide, 1989 1st ed., photo illust., d.w., Buller F: Domesday Book of Giant Salmon, 3 vols and various other angling, destination and collecting related vols. (Q)
£140-240

346

Buller F.: The Domesday Book of Mammoth Pike, 1979, 1st ed., signed by the author and dated August '84, b/w photo illust. throughout text, pict. d.w., clean copy
£200-300

347

Aldam W.H.: A Quaint Treatise on Flees and the Art a Artyfichall Flee Making, London 1876, pub. by John B. Day, 2 col. litho plates and 25 actual specimen flies and fly making materials set in 22 oval sunken mounts, orig. gilt dec. green clo. bdg., gilt edged, clean copy (see illustration)
£800-1200



348

Hardy Angler's Guide, 44th ed., 1921, pict. cover, creased, and three further Hardy Angler's Guides; 1924 46th ed. and two 49th ed. 1927 (4)
£200-300

349

Hardy Angler's Guide, 52nd ed., 1930 and three further Hardy Angler's Guides; 51st ed., 1929, replaced cover, 53rd ed., 1931 and 52nd ed., 1932 (4)
£130-180

350

Halford F.M.: Modern Development of the Dry Fly, The New Dry Fly Patterns, The Manipulation of Dressing Them, and Practical Experiences of Their Use, 1910, London, 2 vols. deluxe limited edition 67/75, signed by the author, vol. II with 33 actual specimen flies set in nine sunken mounts, text vol. with col. plts. of flies and dyes, b/w photo plts and text illust., orig. hf. red cf. bdg., gilt top, ribbed spines with gilt titles and rose emblems (see illustration)
£2000-3000



351

Halford F.M.: An Angler's Autobiography, 1903, London deluxe limited edition 38/100, signed by the author, portrait frontis, introduction by Wm. Senior, 43 full pg. photo plts., b/w chapter vignettes, 286pp, 4to, orig. green morr. bdg., gilt top, ribbed spine with gilt title and tackle emblems
£1600-2600

352

Halford F.M.: Dry Fly Entomology, A Brief Description of the Leading Types of Natural Insects Serving as Food for Trout and Grayling, 1897, London, deluxe limited edition 91/100, 2 vols. signed by the author, vol. II containing 100 actual specimen flies set in 12 sunken mounts, text vol. with 28 col. and b/w pls., marbled end papers, orig. full green morr. bdg., gilt tops and full gilt edge to fly vol. (see illustration)
£1600-2400



353

F.M. Halford Dry-Fly Fishing in Theory and Practice, 1889, London, deluxe limited edition, 52/100, signed by the author, 26 col. and b/w litho pls. on Indian paper, 289pp, advert to rear, Imperial 8vo, marbled end papers, orig. full green morr. bdg, gilt top, ribbed spine with gilt title
£1300-1800

354

Halford F.M.: The Making of a Fishery, 1895, London, deluxe limited edition 12/150, eng. frontis, 4 full pg. pls., 212pp, gilt top, marbled end papers, 4to, orig. full green morr, bdg., ribbed spine with gilt title
£600-900

The following two lots are formerly the property of George C. Monkhouse, elected as a member of the London Fly Fisher's Club in 1945, he was a regular contributor to the Fly Fisher's Journal between 1944-51, the lots were previously sold by Angling Auctions in April 2002 as part of the George C. Monkhouse collection of important bound fly volumes

355

The Flies of Dr. T.E. Pryce-Tannatt, 1949, title page with printed details "Dr. T.E. Pryce-Tannatt M.B.,B.S.,D.P.H., author of 'How to Dress Salmon Flies', published in 1914 tied these specimens of his handiwork especially for me during the years 1943-1948. G.C.M." The thirty five salmon flies, including four gut eyed examples are displayed in twelve sunken, felt lined rectangular compartment on six heavy board mounts with printed pattern details to opposing page, marbled end papers, g.e., green hf. morr. bdg., ribbed spine with gilt title and fish and fly motifs (see illustration)
£1000-1500



356

The Flies of Roger Wooley, n.d., c. 1949, fifty actual specimen trout flies displayed in eight sunken, felt lined compartments on four heavy board mounts, marbled end papers, g.e., red hf. morr. bdg., ribbed spine with gilt fish and fly motifs and an untitled volume of similar form containing eight small salmon flies to gut casts (one cast lacking), g.e., green hf. morr. bdg. (2) (see illustration)
£600-800



357

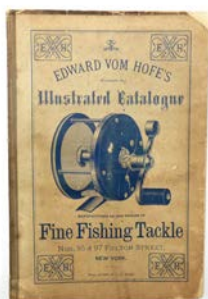
Turner G.: Fishing tackle – A Collector's Guide, 1989, 1st ed., col. and b/w illust. throughout text, h.b., d.w., three facsimile Hardy Angler's Guide copies for 1894, 1900 and 1905 and a Graham Turner Collector's Log Book ring binder (5)

£100-150

358

A very rare Edward Vom Hofe 1898 Tackle Catalogue, soft cover printed with an image of the "Celebrated" Black Bass Reel and 95 & 97 Fulton Street address details, , verso print of a Tarpon, 129pp, b/w illust. throughout text, covers have been sympathetically repaired and strengthened at some time, this edition is accepted as the earliest EVH catalogue to have been produced, in protective clam shell case with hf. burgundy morr. bdg. and marbled boards (see illustration)

£1500-2500



359

A scarce Edward Vom Hofe 1912 Tackle Catalogue, soft cover with applied printed red paper title plaque and 95 & 97 Fulton Street address details, verso print of a Tarpon, b/w illust. throughout text, 174pp, bound in Order Sheets to rear, some cracking to paper on spine and extremities with some very small pieces of upper border missing

£500-800

360

A scarce Edward Vom Hofe 1917 Tackle Catalogue, blue paper soft covers printed details and 112 Fulton St. address, verso printed Tarpon with "Gold Medal Buffalo

1901" and "Gold Medal St. Louis 1904" above and below, b/w illust. throughout text, 173pp, bound in Order Sheets to rear, some staining to rear cover edge

£300-400

361

An Edward Vom Hofe 1923 Tackle Catalogue, 26th ed., cream soft covers, red printed details and 92 Fulton address, verso printed Tarpon, b/w illust. throughout text, 155pp, bound in Order Sheets to rear and a similar Edward Vom Hofe 1924 Tackle Catalogue, 27th ed., green soft covers, both with some light staining to covers otherwise good (2)

£250-450

362

An Edward Vom Hofe Tackle Catalogue, 1928, 31st ed., blue soft covers with printed details, verso printed Tarpon, b/w illust. throughout text, 171pp, bound in Order Sheets to rear, small section of upper spine missing and a similar Edward Vom Hofe Tackle Catalogue 1929, 32nd ed., printed cream soft covers, clean copy (2)

£200-300

363

An Edward Vom Hofe Tackle catalogue 1932, 35th ed., green soft covers, printed details and verso Tarpon, b/w illust. throughout text, 175pp, bound in Order Sheets to rear, spine taped and a similar Edward Vom Hofe Tackle Catalogue 1933, 36th ed., blue soft covers with silver embossed title plate, clean copy (2)

£200-300

364

An Edward Vom Hofe Tackle Catalogue 1936, 38th ed., cream soft covers, green printed details, verso tarpon, b/w illust. throughout text, 173pp, bound in Order Sheets to rear and an Edward Vom Hofe 70th Anniversary Catalogue, 1937, 40th ed., soft covers, damp staining to upper corner (2)

£160-260

365

An Edward Vom Hofe Tackle Catalogue 1941, blue soft covers with gilt Tarpon emblem, 113-115 South Sixteenth St. address details, b/w illust. throughout text, 143pp, bound in Oder Sheets to rear, clean copy and another Edward Vom Hofe Catalogue for 1950, large format, green soft covers, clean copy (2)

£100-200

366

Creel Press: Dry Flies in the Sunshine (The Flies of J.W. Dunne), 2008, deluxe limited edition 23/25, 3 vols., signed by Tim Benn (publisher), intro by Terry Griffiths, two vols. displaying five actual specimen mayflies to one vol. and fifteen actual specimen dry flies to second vol, tied by John Smith and mounted by Terry Griffiths, each numbered and corresponding to Dunne's dressings, flies set within recessed card mounts, text vol. with b/w illust. throughout text, g.e., green full goatskin bdg., ribbed spines with gilt titles, in matching slip case, sold with a 1st ed. copy of Dunne J.W.: *Sunshine and the Dry Fly*, 1924 (see illustration)

£500-800



367

Turner G: Fishing Tackle – The Ultimate Collector's Guide, 2009, signed, col. illust. throughout text, h.b., d.w., Lanigan-O'Keefe M.: *Farlows Salmon Flies*, 2017, signed, h.b., d.w. and a collection of other modern books on fly-tying and angling (Q)

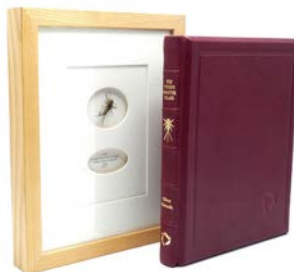
£80-120

368

Edwards O.: Flytyer's Masterclass, 2009, FFCL pub., Ltd. edition 16/120, signed by the author, actual specimen large stonefly

nymph tied by the author, set within a recessed mount to inner front cover, col. photo plts. and b/w illust. throughout text, g.e., full burgundy morr. bdg., ribbed spine with gilt title and fly motif, in matching slip case and sold with the prototype framed display of the inside cover mount of a large stonefly nymph, designed by Terry Griffiths, detailed to verso, (see illustration)

£250-450



369

A collection of angling related volumes, mainly modern hardbacks, various subjects mostly relating to salmon and trout fishing (Q)

£90-130

370

The Fishing Gazette, vol. XVI, 1888 Jan-June, hf. green clo. bdg., marbled boards and five further bound Fishing Gazette vols, each in dec. blue clo. bdg.: vols. 40-44, Jan 1900-June 1902 (6)

£200-300

371

The Fishing Gazette, vol. 5, 1905 Jul-Dec. dec. blue clo. bdg. six further red clo. bound vols.: 1906, 2 vols, 1907, 2 vols, 1909, 2 vols and 1910 vol Jan-June, blue dec. clo.(8)

£200-300

372

The Fishing Gazette, vols. 94-97, Jan 1927 - Dec. 1928, dec. blue clo. bdg. (4)

£100-200

373

The Fishing Gazette, vols 100-103, Jan 1930 - Dec. 1931, bound as two full year volumes, black qt. morr. bdg., gilt titles (2)

£100-200

374

Fishing Gazette: collection of unbound periodicals from 1953, 1954, 1956 and 1957, complete run but with issue 4034 missing from 1954, contained in box files (4)
£100-200

375

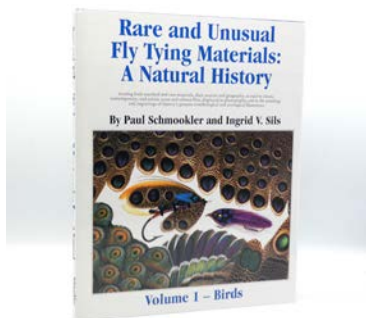
Walton I.: The Complete Angler, 1826 William Pickering ed., sm. 8to, b/w text vignettes, hf. green cf. bdg., marbled boards, gilt ribbed spine
£80-120

376

Brookes R.: The Art of Angling, 1766 3rd ed., London, 135 woodcut eng. throughout text, full tan cf. bdg. ribbed spine and Walton I. & Cotton C.: *The Complete Angler*, 1808, 7th Bagster ed., eng. frontis and plates, vellum bdg. (2)
£150-250

377

Schmookler P. & Sils V.: Rare and Unusual Fly Tying Materials: A Natural History, Vol. 1 - Birds, 1994, lg. format, col. photo plts, throughout text, h.b., d.w., new copy still in card box (see illustration)
£200-300



378

Schmookler P. & Sils V.: Rare and Unusual Fly Tying Materials: A Natural History, vol. 2 - Birds & Mammals, 1997, lg. format, col. photo plts throughout text, h.b., d.w., new copy with plastic wrapper and card box
£200-300

379

Schmookler P. & Sils V.: Forgotten Flies, 1999, lg. format, col. photo plates throughout text, h.b., d.w., new copy with plastic wrapper and card box
£200-300

Rods, Reels & Accessories Cont:-

380

A good Bo Mohlin Em Salmon direct drive salmon fly reel, left hand wind model with black/silver anodised finish, counter-balanced walnut handle on "S" scroll arm set within an anti-foul rim, bridge foot, triple cage pillars, rear off-set six point graduated tension adjuster and milled alloy spindle cap, engraved previous owners name, little used condition and in Peter Loam block leather case (see illustration)
£350-450



381

A Bo Mohlin Mini Trout fly reel and block leather case, left hand wind model with black/silver anodised finish, multi-perforated drum and faceplate, serpentine scroll counter-balanced handle, bridge foot, triple cage pillars, fixed check mechanism, backplate engraved model details and No. 94128, light signs of use
£250-350

382

A fine Tom Moran 2 piece cane brook trout fly rod, 7', #4, light tan silk wraps, nickel silver sliding reel fittings, sycamore reel seat and cigar shaped cork handle, swollen butt, nickel silver suction ferrule, carbide butt ring, hayfork tip eye and snake rings throughout,

slight discolouration to handle from light use only, ink inscribed details and No. 844/11, in bag and brass capped alloy tube
£900-1200

383

A good B. James "Avocet" 3 piece whole and built cane float rod, 11'3", crimson silk inter-whipped sliding alloy reel fittings, "onion" cork handle, suction ferrules, London transfer label, professionally refurbished at some time, excellent condition, in bag
£200-300

384

A good Allcock Aerial model 7950-T3 narrow drummed 4" centre pin reel, nickel silver rimmed caged and six spoked drum with twin xylonite handles, perforated front flange (eight holes) and twin release regulator forks, brass stanchion foot, milled circular brass sliding optional check button and calliper spring check mechanism, polished finish, circa 1920 (see illustration)
£400-500



385

A Hardy Perfect 3 1/8" trout fly reel and block leather case, domed ivory handle, pierced brass foot, strapped rim tension screw and late 1906 calliper spring check mechanism, contracted drum with four rim cusps and nickel silver locking screw, faceplate stamped central circular logo and block engraved previous owners initials (matching initials stamp to case lid), only light wear to finish, from normal use, circa 1908
£350-450

386

A Hardy Perfect 3 5/8" trout fly reel, composition handle, alloy foot, white agate line guide (no cracks), milled rim tension screw and dual check mechanism, faceplate with raised spindle boss, light use only, in zip case 1980's
£140-240

387

A pair of Hardy Sunbeam 9/10 salmon fly reels and two spare spools, each with composition handle, alloy foot, two screw drum latch, white agate line guide, rear spindle mounted tension adjuster, light use only, reels in zip cases (2)
£140-180

388

Four Hardy Marquis 8/9 sea-trout/light salmon fly reels, each with composition handle, alloy foot, two screw drum latch, nickel silver single screw "U" shaped line guide and rear tension adjuster, used condition, in zip cases (4)
£150-250

389

A Hardy Uniqua 3 3/8" trout fly reel, ivory handle, brass foot, nickel silver horseshoe drum latch and fixed 1906 calliper spring check mechanism, faceplate stamped open oval and straight line logos, wear from normal use, circa 1908
£150-250

390

A rare Hardy 1892/3 Transitional Brass Perfect 4 1/4" salmon fly reel, domed bone handle, pierced and waisted bridge foot, strapped rim tension screw and early calliper spring check mechanism, open ball race with phosphor bronze/steel bearings, full annular nickel silver line guide with four support pillars, dished drum with two bands of large and small perforations and threaded spindle recess, faceplate stamped shaded Rod in Hand trademark and central circular 612 patent details, wear from normal use, circa 1893 (see illustration)
£3500-4500



391

A Hardy No.4 Angler's Knife, fitted seven Sheffield steel tools, nickel silver side plates and hinged shackle, 1940's, and three further Hardy items: a wooden handled brass headed salmon priest, an alloy racquet shaped Driflydresser and a pigskin Houghton cast case (4)

£350-450

392

A scarce Bond & Son 3" brass folding handle winch, turned bone handle on waisted straight crank winding arm with slipper release latch and domed iron securing screw, rim cut-away handle recess, block foot (small chip to one end), quadruple cage pillars, rear raised check housing and fixed check mechanism, faceplate script engraved makers name and 62 cannon St., address details, a rarely seen maker, circa 1850 (see illustration)

£450-650



393

A good Hardy Brass Faced Perfect 4 1/2" salmon fly reel, domed ivory handle, pierced brass foot, nickel silver line guide, strapped rim tension screw with Turk's head locking nut and late 1906 calliper spring check mechanism, slightly dished drum with four rim cusps and milled nickel silver locking screw, faceplate stamped Rod in Hand trademark and straight line logo, only very light wear to bronze patina and lead finish, circa 1908

£500-800

394

A Hardy brass 2 1/2" narrow drummed crank wind trout winch, tapered horn handle on waisted straight crank winding arm with domed iron locking screw and stamped makers details, bridge foot, triple cage pillars, fixed check mechanism, light wear to patina from normal use, circa 1894

£250-350

395

A scarce Hardy Bouglé 3" trout fly reel, ebonite handle, alloy foot, triple raised drum pillars (one nickel silver roller), milled rim tension screw and M.II check mechanism (lacking spare pawl), multi-perforated drum face, faceplate stamped make and model details, interior stamped "J.S." (Jimmy Smith), unusually with early enamelled finish, light wear from normal use, 1930's (see illustration)

£900-1300



396

A Hardy Brass Faced Perfect 2 5/8" Houghton Dry Fly wide drummed trout fly reel, domed horn handle, brass foot, strapped rim tension screw and early calliper spring check mechanism, dished drum with four rim cusps and milled nickel silver locking screw, faceplate stamped Rod in Hand trademark, enclosed oval and straight line logos, small chips to face rim otherwise wear from normal use, circa 1900

£500-800

397

A very rare Hardy brass raised pillar 3" plate wind light salmon fly reel, domed cow horn handle, bridge foot, quadruple raised pillars, fixed check mechanism, faceplate with raised two screw spindle boss

and stamped Rod in Hand trade mark and enclosed oval logo, reel retains much of the originally bronze patina and is a very rarely seen model with the raised pillar version more usually seen in the crank wind, rather than plate wind style (see illustration)
£800-1200



398

A Hardy Ultralite Disc Salmon fly reel and spare spool, black anodised finish, composition handle, two screw drum latch and rear milled spindle tension adjuster, in cloth pouch and a Marquis No.2 salmon fly reel and spare spool, ribbed brass foot, two screw spring drum latch, rear tension adjuster, in zip case, both with light use (2)
£140-240

399

A Hardy Marquis #10 light salmon/sea-trout fly reel and spare spool, composition handle, alloy foot, rear tension adjuster, replaced rear spindle nut, in zip case and four further reels; an Orvis Rocky Mountain 7/8, a Greys G-Tec 380, a Shimano Ultegra 78, in cases and a Walker Bampton 3 1/2" trout fly reel, brass foot, two screw drum latch and adjustable check, only very light wear to lead finish (5)
£160-260

400

A fine and rare Hardy Unique Salmon fly reservoir, the rectangular polished mahogany case with fall front door, interior fitted ten sliding drawer each with ivory bun handle, two ivory index tablets, number disc and bars of nickel silver spring fly clips holding a collection of 219 fully dressed single iron salmon flies, door interior with

applied rectangular ivory trade plaque, top with inset brass name plaque and recessed swing handle, very good overall condition, circa 1915 (see illustration)
£2000-3000



401

A Hardy "No.2 A.H.E. Wood" 3 piece (2 tips) salmon fly rod, 12', crimson silk inter-whipped, sliding alloy reel fitting, lockfast joints, 1950, some crazing to varnish, in bag
£120-180

402

A Sharpe's "Scottie" 3 piece (2 tips) spliced cane salmon fly rod, 15', #11, crimson silk wraps, sliding alloy reel fitting, with splice protectors, in bag and a matching 14', #10/11 salmon fly rod, with splice protectors, in bag, both in very good condition (2)
£160-260

403

A Sharpe's "Scottie" 3 piece (3 tips) spliced cane salmon fly rod, 13', #9, crimson silk wraps, sliding alloy reel fitting, with splice protectors, in bag and a matching 12', #8/9 salmon fly rod, two tips, with splice protectors, in bag, both in good condition (2)
£150-250

404

An Army & Navy 4 1/2" brass salmon fly reel, raised winding plate with ivory handle and raised two screw spindle boss (lacking one screw), bridge foot, quadruple cage pillars, fixed check mechanism and a matching 4 piece greenheart salmon rod, 17', brass sliding reel fitting, one piece tapered handle, snake eyes, spigot ferrules, no bag (2)
£130-180

405

A Hardy Brass Faced Perfect 4" salmon fly reel, domed ivory handle, brass foot, strapped rim tension screw with Turk's head locking nut and 1906 check mechanism, slightly dished drum with four rim cusps and milled nickel silver locking screw, faceplate stamped Rod in Hand trademark and straight line logo, light wear to finish from normal use only, circa 1906 (see illustration)

£450-650



406

A Michael Evans "Arrowhead Taycaster 4" 4 piece salmon fly rod, 16', #11/12, crimson/gold tipped silk wraps, black anodised screw grip reel fitting, new/unused with plastic wrappers still on handle, in bag and cordura tube

£180-260

407

A Michael Evans "Arrowhead Speycaster 4" 4 piece carbon salmon fly rod, 15', #10/11, crimson/gold tipped silk wraps, black anodised screw grip reel fitting and another "Speycaster" 3 piece salmon fly rod, 15', #10/11 of similar design, in bags (2)

£160-260

408

A Michael Evan "Arrowhead Longbow" 3 piece carbon trout fly rod, 9'9", #7/8, crimson/gold tipped silk wraps, black anodised screw grip reel fitting, new/unused with plastic wrappers still on handle, in bag and cordura tube and a Michael Evans "Roll-Caster" 2 piece carbon trout fly rod, 9', #5/6, new/unused condition, in bag (2)

£130-180

409

An Ogden Smith (Dingley built) Exchequer 3 1/2" trout fly reel, ebonite handle, brass foot, milled rim tension screw and Mk.I check, interior stamped "D.2", a Foster's brass and ebonite 3 1/2" light salmon fly reel, horn handle, bridge foot, fixed check mechanism, front ebonite flange with two cracks and a Nottingham 3 1/2" strap back reel (3)

£130-180

410

A good Allcock Aerial model 7950-T6 3 1/2" centre pin reel, caged and six spoked drum with twin xylonite handles, perforated front flange (eight holes) and twin regulator/release forks, brass stancheon foot, rear sliding optional check button and bar spring check mechanism, backplate stamped circular trade make, light wear from normal use only, circa 1925 (see illustration)

£300-400



411

A B. James "Richard Walker Mk.IV" 2 piece cane carp rod, 10', crimson inter-whippings, sliding alloy reel fittings, "donut" cork handle, suction joint, London transfer label, some marks to varnish, in bag

£140-240

412

A Vision VLA 11 salmon fly reel and three spare spools, graphite anodised finish, counter-balanced handle, large arbor drum, rear spindle mounted tension adjuster, in box, a similar Vision VLA 910 reel and spare spool, boxes and a Vision Koma VK78 reel and spare spool, boxed, all with light use (3)

£150-250

413

A collection of various salmon and trout fly reels, various makes and model by Leeda, Martin and Mitchell automatic reels, System 2, et al, including some spare spools, some in modern round leather stud lock cases and two sea multiplier reels: a Penn Jigmaster 500 and an Abu Ambassadeur 7000 (Q)
£140-240

414

A collection of sixteen Mitchell fixed spool reels, various models including 4145A, 304, 307, 300, 301, 324, 410 and three Excellence 40 models, along with a large quantity of various Mitchell spare spools (16)
£130-180

415

An Allcock Aerial model 5138-T1 4 ½" centre pin reel, caged and six spoked drum with twin horn handles, ebonite flanges, front flange stamped "patent" and twin release regulator forks, bras stancheon foot, rear sliding optional check button and calliper spring check mechanism, light wear from normal use, circa 1920 (see illustration)
£350-450



416

A B. James "Richard Walker Mk.IV Avon" 2 piece coarse rod, crimson inter-whipped, sliding alloy reel fittings, onion cork handle, tip 7" short and a similar B. James "Richard Walker Mk.IV" 2 piece cane rod tip 12" short, in bags (2)
£100-150

417

A collection of various tackle including a Shimano 6010 VX fixed spool reel and spare spool, boxed, a teak double sided fly

box holding a good selection of trout flies, a collection of fly tying materials, various lures and ten various, older model carbon fly and coarse rods by Hardy, Fladden, Daiwa et al (Q)
£140-240

418

A Bogdan style 3 ¾" multiplying salmon fly reel, left hand wind model with black anodised end plates, serpentine crank handle, block foot, rear milled optional check button and off-set nine point graduated check adjuster, only light use, in suede pouch (see illustration)
£300-500



419

A Loop "Opti" 4 piece carbon salmon fly rod, 14', #9/10, black silk wraps, silver anodised screw grip reel fitting, light use only, in bag
£130-180

420

A part set of Hardy 1902 Replica Brass Faced Perfect trout fly reels, including the 3" and 3 ½" wide drummed models (lacking the 2 ½" model), each with ivorine handle, brass foot, strapped rim tension screw and early style calliper spring check mechanism, drum with milled nickel silver locking screw, ltd. ed. no. 027/250 and in original baize lined fitted hide case, both reels in new/unused condition (see illustration)
£500-800



421

A Hardy Sunbeam 9/10 light salmon fly reel and spare spool, composition handle, alloy foot, white agate line guide, two spring latch and rear milled spindle tension adjuster, wear from normal use, in zip cases, a Hardy Marquis 8/9 Multiplier fly reel, in zip case and a Hardy Marquis 7 and spare spool, in zip cases (3)
£130-180

422

A Ted Juracsik Billy Pate 4" direct drive saltwater/salmon fly reel, black/gold anodised finish, counter-balanced handle, spindle mounted milled tension wheel to face, only light use, in suede pouch
£200-300

423

A Sage 3300D trout/saltwater fly reel, black anodised finish, large arbour drum with counter-balanced amboyna wood handle, milled spool release nut and rear spindle mounted graduated tension adjuster, light use only, in neoprene pouch and a Sage "TCX" 4 piece carbon fly rod, 9', #10, anodised screw grip reel fitting, little used condition, in bag (2)
£200-300

424

A Hardy Sovereign 5/6/7 trout fly reel, gold anodised finish, counter-balanced rosewood handle, two screw spring drum latch, nickel silver "U" shaped line guide, rear sliding optional check button and milled spindle mounted tension adjuster, light use only, in leather zip case and an Orvis "Rocky Mountain" 4 piece carbon trout fly rod, 8', #4, in bag (2)
£140-240

425

An S.E. Bogdan 300 multiplying salmon fly reel, gold anodised, right hand wind model with black anodised counter-balanced serpentine crank handle set within an anti-foul rim, block foot, rear milled optional check button and off-set ten point graduated tension adjuster, backplate with applied rectangular alloy trade plaque, faceplate neatly block engraved previous owners name, light wear from normal use only, in suede pouch, this gold anodised

finish model is often referred to as the "A&F version" and, it is believed, was produced for sale exclusively through the Abercrombie & Fitch sporting store (see illustration)
£3000-5000



426

A Hardy "Gem" 3 piece carbon trout/sea-trout fly rod, 10', #6, green silk wraps, wooden reel seat and screw grip reel fitting, in bag and cordura tube
£130-180

427

A Hardy "Crown Houghton" 3 piece (2 tips) cane trout fly rod, 10', green silk inter-whipped, screw grip reel fitting, lacking butt cap, one replacement tip eye, some re-whips, in bag and three various Sharpe's cane trout fly rods, in bags (4)
£140-240

428

A Hardy "Graphite Salmon" 3 piece carbon salmon fly rod, 15', #10, screw grip reel fitting and four various older carbon trout fly rods, various makers including Hardy, Bruce & Walker et al (5)
£130-180

429

A good Allcock trade folio of trout flies to gut, the rectangular black rexine folding case opening to reveal four panels displaying 78 various patterned trout flies to gut, on red bordered card panels with printed pattern numbers beside each, case gilt stamped makers details and stag trademark and a single trade panel of thirteen Allcock salmon flies of similar design, circa 1915
£200-300

430

A scarce Hardy Silex Multiplier 2 3/4" bait casting reel, ebonite handle on off-set circular drive plate, ribbed brass foot, rim mounted ivorine casting bar, knurled tension adjuster and rear ivorine quadrant weight indicator, wear from normal use, circa 1930 (see illustration)

£600-900



431

A Hardy Brass Faced Houghton Dry Fly Perfect 2 5/8" wide drummed trout fly reel, domed ivorine handle on brass milled cup, brass foot, strapped rim tension screw and early calliper spring check mechanism, slightly dished drum with four rim cusps and milled nickel silver locking screw, faceplate stamped Rod in Hand trademark, enclosed oval and straight line logos, some pitting to face rim otherwise light wear from normal use, circa 1900

£500-800

432

A good Allcock Aerial 7950-T6 3" centre pin reel, caged and six spoked drum with twin xylonite handles, perforated front flange (eight holes) and twin release /regulator forks, brass stanchion foot, rear sliding brass optional check button and bar spring check mechanism, backplate stamped circular trademark, light use only, circa 1925 (see illustration)

£350-550



433

A scarce Hardy Perfect 2 1/2" wide drummed trout fly reel, domed ivorine handle on brass milled cup, brass foot, strapped rim tension screw and early calliper spring check mechanism, slightly dished drum with four rim cusps and milled nickel silver locking screw, un-leaded faceplate stamped Rod in Hand trademark, open oval and straight line logos, wear from normal use only and the smallest size offered in the wide drummed Perfect range, circa 1898 (see illustration)

£800-1200



434

An Army & Navy pigskin salmon fly wallet, interior fitted parchment fly/cast leaves and felt dampers, end pouch pockets and tool holders, containing 37 gut eyed fully dressed salmon flies, wrap-around strap, gilt stamped retailers details, a collection of fully dressed and hair wing flies, some in original packets, twenty five Farlow low water salmon irons in original packets and three various minnow baits (Q)

£130-180

435

A Hardy Perfect 4" salmon fly reel, ivorine handle, ribbed brass foot, revolving nickel silver line guide, milled rim tension screw and Mk.II check mechanism, drum with nickel silver locking screw, handle loose on spindle and wear from normal use, in brown card trade box, circa 1920

£200-300

436

An Allcock Aerial model T-7950-T9 4 ½" centre pin reel, caged and six spoked drum with twin xylonite handles, perforated front flange (eight holes) solid backplate and twin release/regulator forks, brass stanchion foot, rear sliding optional check button and bar spring check mechanism, light wear only, circa 1925 (see illustration)

£300-400



440

A very rare Hardy Silex No.2 experimental/special order 4 ¼" salmon fly reel, shallow cored drum with single ivorine handle on milled brass cup, three screw spring drum latch, brass foot block engraved presentation details "To D.R. Falconer, Betty Hill, 1916 From J.A.R., M.R., S.G.S., J.J.H." milled brass rim mounted check adjuster and Silex style heavy bar spring check mechanism, no further rim casting controls (and no filled rim sections) which indicates this reel would have been produced specifically for use as a salmon fly reel rather than a bait casting reel which would require a lever to disengage the drum for casting, interior backplate indistinctly stamped A.H.W. (Arthur Wall), this reel is very likely a special order model or an experimental forerunner to the St George salmon reel produced some four years later, overall excellent condition with only light signs of use and in Hardy metal edged brown card box and a previously unseen model, circa 1915 (see illustration)

£1400-2400

437

A Hardy brass and ebonite 2 ½" trout fly reel, tapered bone handle, twin German silver rims, bridge foot, triple cage pillars, fixed check mechanism, faceplate with raised two screw spindle boss and stamped Rod in Hand trademark and enclosed oval logo, wear from normal use, circa 1895

£160-240

438

A good Hardy Perfect 3 ½" light salmon fly reel, domed ivorine handle, brass foot, strapped rim tension screw with Turk's head locking nut and 1906 calliper spring check mechanism, slightly dished drum with four rim cusps and milled nickel silver locking screw, faceplate stamped central logo, only light wear to lead finish, circa 1908

£350-450

439

A rare Malloch Multiplier 2 ⅝" alloy side casting reel, off-set cow horn handle on short waisted crank winding arm and set within an anti-foul rim, raised faceplate with sliding brass optional check button, swivelling brass foot with integral line guide and spring release latch, non-reversible drum, faceplate stamped oval logo, only very light use and a rarely seen example in the smallest available size, circa 1920 (see illustration)

£450-650



441

A scarce Hardy "Phantom" 2 piece cane brook trout fly rod, 4'4", #5, black/scarlet tipped silk wraps, sliding alloy reel fitting, suction joint, 1976, in bag and a Hardy Flyweight trout fly reel, ebonite handle, two screw drum latch, alloy foot, two screw nickel silver "U" shaped line guide and fixed check mechanism, in zip case (2)

£250-350

442

A Farlow "Elf" 2 piece cane brook trout fly rod, 6'6", #4/5, crimson silk wraps, sliding alloy reel fitting, suction joint, in bag

£130-180

443

A good Hardy "Wye" 2 piece cane salmon fly rod, 11', #7, gold/black tipped whippings, sliding alloy screw grip reel fitting, lockfast joint, agate lined butt ring, 1968, in bag and a Hardy Zenith light salmon fly reel, ebonite handle, two screw drum latch, alloy foot, two screw nickel silver "U" shaped line guide and adjustable check mechanism, in zip case (2)

£160-260

444

A Hardy St George 3 3/8" trout fly reel, ebonite handle, alloy foot, white agate line guide (no cracks), two screw drum latch, milled rim tension screw and Mk.II check mechanism, light wear to enamel finish from normal use, in zip case, 1960's

£140-180

445

A good Hardy Super Silex Multiplier 3 1/2" bait casting reel and card box, reverse tapered ebonite handle on off-set circular drive plate, ribbed brass foot, cold lacquered drum with spring locking latch and jewelled spindle bearing, rim mounted ivory casting trigger and milled nickel silver tension regulator with rear ivory quadrant weight indicator, only light signs of use and in original brown card trade box, 1930's (see illustration)

£600-900



446

A Malloch brass 3 1/4" side casting reel, horn handle swivelling brass foot with integral line guide and spring release latch, reversible drum, rim mounted optional check lever, light wear to bronze patina only, circa 1910 and two further reels, a Farlow 3 1/2" Serpent salmon reel, in box and a Hardy Viscount 150, in zip case (3)

£130-180

447

A Micheal Evans "Arrowhead Speycaster 3" 3 piece carbon salmon fly rod, 16', #10/11, screw grip reel fitting, used, in bag, another "Speycaster " 3 piece carbon salmon rod, 15', #9/11, used, in bag and two older model Hardy carbon salmon fly rods; a "Salmon Deluxe" 3 piece, 15'4", #10 and a "Favourite" 3 piece, 16', #11, used condition, in bags (4)

£160-260

448

A Hardy "Spey Twitching?" 3 piece cane salmon fly rod, 17'3", crimson/black tipped wraps, black inter-whippings, sliding brass reel seat, 1902, no bag, two greenheart 3 piece salmon rods by Anderson and one stamped heron logo, a Farlow's whole cane and greenheart salmon rod, no bags, two extending salmon gaffs and a Snowbee extending wading staff (7)

£130-180

449

Six various carbon fly and spinning rods various makes and models including Bruce & Walker Michael Evans Speycaster 15' and Speycaster Pro, 15'salmon fly rods, a Hardy Fibalite Spinning, 9'6"et al, all in used condition, in bags (6)

£150-250



The following 19 lots are the first offering from the estate of the late Chris Ball (1946-2023), one of the most noted carp anglers of the last 50 years, historian, archivist, author, presenter and quite simply, one of the most likeable and knowledgeable individuals to be found in the world of modern carp fishing. Inducted into the Carp Hall of Fame in 2011, he was also a former President of the Carp Society. Chris will perhaps be best remembered for his encyclopedic knowledge of the history of modern carp fishing, the men and the tackle they used. As an auctioneer, and personal friend of more than 25 years, Chris was always my go to if I ever needed information on the subject of early carp fishing tackle. As a fisherman, he will perhaps be best remembered for taking the art of surface fishing for carp to an entirely new level. The remainder of the collection will be offered in our autumn sale in September and all lots will be sold with a Certificate of Authenticity signed by Chris's widow Lynne and Angling Auctions

450

The Richard Walker presentation Mitchell 300 fixed spool reel, third version (1949) with black finish, modified stepped composition handle, spring folding arm, half bail arm and angled anti-reverse lever, upper gear housing with applied brass plaque engraved "Presented by Angling Times to Richard Walker, Walker-Sails Match 1953", reel is in used but overall fair condition with light signs of wear to finish from normal use and with Mitchell perspex display stand (see illustration)

£500-800



451

A scarce Mitchell (Carpano & Pons) CAP fixed spool reel, 2nd issue model (1938) with black finish, domed side plate, turned and tapered alloy handle, external drum rotor balance, half bail arm, caged spool arbor and no anti-reverse and a 3rd issue (1946) CAP reel of similar design but with milled disc anti-reverse button and smaller raised convex gear house cover (2)

£130-230

452

A rare Edward Barder "The No.21 Limited Edition Bishop Carp Rod" 2 piece cane rod, 11'1", tan/black tipped silk wraps, sliding alloy reel fittings, agate lined butt and tip rings, hard chromed stainless steel bridge rings throughout, 26" flared cork handle, stepped suction ferrule, indian ink inscribed model details and dated August 1991, only very light signs of use, in bag

£1000-1500

453

A B. James "Richard Walker Mk.IV Avon" 2 piece cane coarse rod, 10', crimson silk inter-whipped, black anodised sliding alloy reel fittings, "onion" cork handle, red agate lined tip and butt rings, stepped suction ferrule, London transfer label and applied gilt oval retailers transfer label for Fred Harvey, Tackleist, 18 Barton St., Glos., no bag

£200-300

454

A B. James "Richard Walker Mk.IV" 2 piece cane carp rod, 10, crimson silk inter-whipped, sliding alloy reel fittings, "trumpet" cork handle, stepped suction ferrule, clear agate butt and tip rings, Ealing trade label, no bag
£180-260

.....

455

A rare Mitchell 300 tournament casting reel, 1969 model with tapered quadruple section tournament spool, extended manual triple pick-up line guide, folding, screw locking handle above a milled alloy tension regulating adjuster, rear anti-reverse bar lever, white model details (see illustration)
£400-600



456

A Hardy Altex No.2 Mk.III fixed spool reel, turned ebonite folding right hand wind handle, full bail arm and ebonite spool with four point nickel silver star tension adjuster, 1940's and a similar Hardy Altex No.2 Mk.V right hand wind fixed spool reel, 1960's (2)
£120-180

.....

457

An Allcock Aerial model 7950-T2 4" centre pin reel, caged and six spoked drum with twin xylonite handles, perforated front flange (eight holes) and twin release/regulator forks, brass stanchion foot, rear sliding brass optional check button and calliper spring check mechanism, wear from normal use, circa 1920 (see illustration)
£300-500



458

A Barry Grantham "Mk.IV Carp" 2 piece cane carp rod, 10', green silk wraps, sliding alloy reel fittings, agate line bridge rings throughout, suction ferrule, ink inscribed model details and "Made by B. Grantham for Chris Ball", only light use, no bag
£200-300

.....

459

A B. James "Richard Walker" carp landing net, folding "V" laminated 36" cane arms with brass supports, cord stretcher and Tufnell spreader bar, whole bamboo and brass mounted 60" handle ink inscribed Ealing details, lacking net
£200-300

.....

460

A fine Edward Barder "Chris Yates Carp Crawler" 2 piece cane carp stalking rod, 8'3", crimson/scarlet tipped silk wraps and crimson silk inter-whippings, down locking nickel silver reel fitting with polished olive wood seat, 22" "donut" cork handle with nickel silver butt cap, suction ferrule, red agate lined butt and tip rings hard chromed stainless steel bridge rings throughout, red ink inscribed model details and "Hand made by Edward Barder for Chris Ball in 1993", only very light signs of use, in bag
£800-1200

.....

461

The Len Gurd presentation Mitchell 300 Pro Anniversary Edition fixed spool reel, 1991 45th Anniversary model with black finish and red lined border to gear casing and drum edge, folding wooden “T” bar handle, full bail arm, rear anti-reverse bar lever, applied gold plaque to upper gear housing engraved “2751”, with Mitchell perspex display stand and original card box with spare spool, bail spring/roller and original paperwork stating production date as 12.6.90 (see illustration) **£200-300**

** Len Gurd founded the original Linear Fisheries complex, Linford Lakes Milton Keynes in the mid 1970’s and is credited with being one of the most influential figures in carp fishing during the 1970’s onwards. In the early 1990’s he co-founded the Oxford Linear carp fishery, regarded by many as the best carp fishery in the UK. A successful film director and video maker, he produced the highly acclaimed Total Fishing series (Discovery) which launched the career of Matt Hayes along with producing many other highly regarded films on carp and other fishing. He sadly passed away at the age of 78 in March 2018



462

A Mitchell 301 3rd Version (1949) fixed spool reel, black finish, tapered alloy right hand wind handle with spring folding arm, half bail arm, “L” shaped anti-reverse lever and two similar 3rd version 301 fixed spool reels with later shaped plastic handles (3) **£100-150**

463

Nine various artisan fishing floats, various designs including cork and quill bodied examples, many named examples, “The CB Margin Master”, “Keepnet Full of Dreams” et al hand made by various renowned float makers including Andrew Field, Colin Whitehouse et al (9)

£140-240

464

A scarce B. James “Richard Walker Mk.IV” 2 piece carp rod, 10’, green silk inter-whipped, alloy sliding reel fitting, “trumpet” cork handle, clear agate butt and tip rings, bridge rings throughout, stepped suction ferrule, Ealing transfer label, professionally re-whipped at some time, no bag

£300-400

465

A pair of Sharpe’s “Chris Ball Carp and Avon” 2 piece impregnated cane rods, 10’, made to C.B.’s specifications and each with crimson silk wraps, sliding alloy reel fittings, “donut” cork handles and suction ferrules, Avon model with agate lined butt and tip rings, full open bridge rings throughout, both with only light use, no bags (2)

£300-500

466

The “Guildford” Walker style carp landing net, folding laminated cane 38” “V” arms with brass supports and alloy ferrule, oak spreader bar ink inscribed “Made of oak from Redmire Pool’s original dam rail, by Len Arbury for Chris Ball “The Guildford Net”, net arms also ink inscribed “The Guildford net, circa 1955” and “Restored by Len Arbury 2016, Chris Ball”, 58” light wood handle with brass ferrule and butt cap and similarly inscribed, knotless mesh net

£200-300

467

A Barry Grantham “Carp” Walker style carp landing net, folding laminated cane 36” “V” arms with green silk whipped brass supports, oak spreader bar and brass capped whole bamboo 3 ½” handle ink inscribed “36” Carp, made by B. Grantham for Chris Ball, Jan 2002”

£200-300

468

A John Weaver "Mk.IV Carp" 2 piece cane carp rod, 10', crimson silk inter-whipped, sliding alloy reel fittings, "onion" cork handle, red agate line butt and tip rings, suction ferrule, light use, no bag

£130-180

.....

469

Four framed displays of carp scales, including two scales from Clarissa, 1952, a scale from "Mary" taken in Wraysbury, 1993, a scale from a 38lb Redmire (found dead by "B.B.," and Bob Richards in 1953), three scales from various fish caught at Frensham Small Pond in 1987 and a framed original Jack Hilton carp hook tied with a Domhof knot, presented to C.B. by Keith Hilton in 1996, all framed and glazed and set within recess card mounts (5)

£160-260

.....

Other Properties

470

A good Edward Vom Hofe Restigouche 3/0 direct drive salmon fly reel and block leather case, ebonite and nickel silver construction with counter-balanced serpentine crank handle set within an anti-foul rim, pierced foot stamped model details, and date stamped "K.336" (1918), triple cage pillars (two double roller), milled sliding optional check button to face, rear spindle mounted seven point graduated check adjuster, spindle cap stamped Jan '83 patent details, very goods overall condition, circa 1918, "D" shaped block leather case stamped previous owners initials (see illustration)

£1300-1800



471

A scarce Edward Vom Hofe Islamorada size 1 bonefish multiplier reel, rarely seen model 750 (made 1940/42 only) with take-apart feature, ebonite and nickel silver construction with off-set counter-balanced "S" scroll handle mounted above a six point capstan star drag, rm mounted casting lever, pierced foot, stamped model details, rear sliding optional check button, twin double drum pillars, hinged spindle oil port covers, a rarely seen model, in sheepskin lined block leather "D" case, circa 1940

£500-800

.....

472

A rare Edward Vom Hofe Commander Ross 10/0 model 722 big game multiplier reel, ebonite and nickel silver construction, 2:1 ratio gearing, off-set counter-balanced (later) turned ebonite handle mounted above a six point capstan star drag, twin rim mounted drum release/check levers, pierced foot stamped model details and date stamp "D.271" (1937), triple drum pillars, two sets of pillar mounted twin harness lugs, hinged spindle oil port covers, stamped May '02 patent details, 1937 (see illustration)

£700-1000



473

A Penn 45 GLS big game/sea multiplier reel, graphite framed model with large off-set "T" bar crank handle and lever drag, in card box and three further seas multiplier reels. a Penn 320 GT1, in zip case, a Daiwa Sealine 30 H, boxed and a Daiwa Sealine 400H (4)

£120-160

.....

474

A good Abel Super 9 light salmon/saltwater fly reel, black anodised finish, ventilated large arbour drum with counter-balanced rosewood handle, block foot, rear spindle mounted milled tension adjuster, light use only, in original padded cloth pouch
£200-300

475

A fine Hardy Hotspur Cascapedia 10/11 limited edition salmon fly reel, gold anodised alloy cage and black anodised side plates, stainless steel counter-balanced serpentine winding arm set within an anti-foul rim, block foot, rear sliding optional check button and spindle mounted twenty one point graduated tension adjuster with family crest and colours of the Percy family, faceplate inset four polished alloy medallions with model and maker (P, Lundy) details and limited edition number 117/150, in velvet lined block leather "D" case and in new/unused condition with original packing, including a boxed set of six hand tied Hotspur patterned double salmon flies, designed by the Duke of Northumberland's North Tyne ghillie Gerald Binovec (see illustration)
£1000-1500

** Made to celebrate the 950th anniversary of the de Percy family purchasing Alnwick castle, the reel has been designed in conjunction with the present 12th Duke of Northumberland, himself a keen salmon angler. The limited edition number 001 reel was sold at an Atlantic Salmon Trust charity fund raising dinner for £55,000.00 setting a new auction world record for a British made fly reel. The limited edition run of 150 reels sold out at the Hardy factory immediately upon release.



476

A Sage "ZXL" 4 piece carbon brook trout fly rod, 7'6", #3, crimson silk wraps, nickel silver screw grip reel fitting and polished wood seat, only very light signs of use, in bag and a Lamson 1 2 ¾" trout fly reel, black finish, counter-balanced handle, rear check adjuster, spring drum latch (2)
£140-240

477

A Fin-Nor No.2 Anti-Reverse saltwater fly reel and spare spool, gold anodised finish, twin handles mounted on stainless steel winding arm below a milled spindle tension adjusting wheel, light use only, in neoprene pouch
£180-260

478

A good Charlton 8450c Configurable trout/saltwater fly reel, black anodised, left hand wind model, multi-perforated drum with counter-balanced rosewood handle, push button spindle release, block foot and rear star tension adjusting wheel, #7/8 narrow spindled spool, only light use (see illustration)
£500-800



479

A Ted Juracsik Bill Pate Anti-Reverse Tarpon 3 ¾" fly reel, black anodised right handle wind model, handle on cross bar winding arm mounted above a gold anodised knurled spindle tension adjuster, stamped "K.283" beside foot, light use only
£200-300

480

A scarce Allcock Lever Type model 7981 LT 4 ½" wide drummed centre pin reel, caged and six spoked drum with twin reverse taped horn handles, ventilated front flange (eight holes), solid backplate, brass stanchion foot, rim mounted xylonite brake lever and rear optional sliding brass check button with bar spring check mechanism, rear plate stamped model details and circular trademark, light wear from normal use, a rarely seen model made 1921-26 only (see illustration)

£600-900



481

A scarce Hardy "Marvel" 3 piece (2 tips) cane brook trout fly rod, 7'6", #4, tan silk whippings, green silk ferrule wraps, sliding alloy reel fitting, suction ferrules, agate lined butt and tip rings, snake eyes throughout, 1937, in bag and alloy tube

£240-340

482

An Orvis Battenkill III trout fly reel, large arbour drum with counter-balanced handle and spring release latch, rear tension adjuster, light use only, in zip case and an Orvis "Trident TL" 4 piece carbon trout fly rod, 9', #5, green warps, wooden reel seat and screw grip fitting, in bag and cordura tube (2)

£140-240

483

A Hardy St George 3 ¾" trout fly reel, ebonite handle, alloy foot, white agate line guide (no cracks), two screw drum latch, rim tension screw and Mk.II check mechanism, only very light wear to finish from normal use, 1950's

£130-180

484

A Hardy Sunbeam 7/8 trout fly reel, composition handle, alloy foot, two screw spring latch, rear tension adjuster, in zip case, a Hardy Marquis 6 trout fly reel, in zip case and various other items including a small French reel creel, canvas and leather trimmed bag, a folding wooden handled salmon gaff, a Greys GRX 7/8 sea-trout fly rod, in cordura tube, three other various rods and other items (Q)

£130-180

485

An Allcock Aerial model 7950-T9 wide drummed 3" centre pin reel, caged and six spoked drum with twin xylonite handles, perforated front flange (eight holes) and twin release regulator forks, brass stanchion foot, rear sliding optional check button and bar spring check mechanism, backplate stamped circular trademark, circa 1930 (see illustration)

£300-500



486

A Hardy Eureka 3 ½" centre pin trotting reel, shallow cored drum with twin ebonite handles, multi-perforated face and nickel silver telephone drum latch, ribbed brass foot, rim mounted optional check lever and bar spring check mechanism, light wear from normal use, 1930's

£160-260

487

An Allcock Aerial model 7950-T9 wide drummed 4" centre pin reel, caged and six spoked drum with twin xylonite handles, perforated front flange (eight holes) and twin release regulator forks, B.P. line guard, brass stancheon foot, rear sliding optional check button and bar spring check mechanism, backplate stamped circular trademark, circa 1930 (see illustration)

£350-550



488

A Thomas & Thomas "HS 864" 2 piece carbon trout fly rod, 8'6", #4, wooden reel seat, screw grip fitting, in bag and alloy tube and two further older Thomas & Thomas 2 piece model carbon trout fly rods; an "HS 905", 9', #5 and a "HS 906", 9', #6, in bags and alloy tubes (3)

£140-240

489

Seven various cane trout/salmon fly and salmon spinning rods, various makes and models including Kerry, Westley Richards, Walker Bampton et al, all in bags (7)

£150-250

490

A rare Hardy Perfect 3 3/4" salmon reel, formerly the property of A.H.E. Wood, "Eunuch" model (no ball bearings) with short domed ivory handle on brass cup, brass foot, strapped rim tension screw and 1912 check mechanism, slightly dished drum with milled nickel silver locking screw, faceplate stamped central circular logo, light wear from normal use and housed in an un-named strap-over block leather case, lid black stamped "A.H.E.W. No.8", circa 1915 (see illustration)

£800-1200



491

A scarce Irish brass spike fitting winch, turned bone handle on curved crank winding arm, triple cage pillars, fixed check mechanism, one screw lacking to backplate, block foot with square tapered spike fitting, 1 5/8" diameter, circa 1850 (see illustration)

£300-400



492

Three Hardy Marquis #7 trout fly reels, each with composition handle, alloy foot, two screw spring drum latch and rear tension adjuster, wear from normal use, in zip cases

£120-160

493

A pair of Hardy Marquis No.2 salmon fly reels, each with composition handle, ribbed brass foot, two screw drum latch and rear tension regulator, used condition, in zip cases and four System Two 1213 salmon fly reels, light wear, in zip cases (6)

£140-240

494

A scarce W.B. Gowland (late Farlow) folding handle 3 1/2" brass salmon winch, turned baluster bone handle on straight crank winding arm with domed iron locking screw, cut-away rim handle recess, rivetted

block foot, triple drum pillars, rear raised check housing and fixed check mechanism, faceplate script engraved makers details, circa 1870 (see illustration)

£400-600



495

A rare Hardy alloy Birmingham 2 1/2" trout fly reel, domed ivory handle, brass bridge foot and triple cage pillars, fixed check mechanism, faceplate with raised two screw spindle boss and stamped Rod in Hand trademark and enclosed oval logo, a rare alloy version, usually seen in brass, circa 1896 (see illustration)

£400-600



496

A Hardy Silex 4 1/4" bait casting reel and block leather case, caged drum with twin ivory handles on alloy crossbar winding arm, jewelled spindle bearing and spring release latch, rim mounted casting trigger and optional check disc (lacking tension regulator screw), factory fitted rolling eye line guide, only light wear to lead finish, circa 1905

£150-250

497

A Hardy Ward line winder, the four oak arms with adjustable line supports, stamped makers details, iron table clamp fitting, later brass spindle locking nut, circa 1920 and an unusual Hardy Lightweight alloy line drier, four winding arms with milled nickel silver locking screws, arm support stamped makers name and on steel "G" clamp table fitting, 1920's (2)

£150-250

498

A 19th Century iron gut twisting engine, turned wooden handle on straight crank winding arm which operates the six geared flyer pick-ups, square chamfered iron gear housing, mounted on "G" clamp table fitment, circa 1870 (see illustration)

£160-260



499

A Hardy Sea Silex 6" sea centre pin reel, twin bulbous ebonite handles, nickel silver telephone drum latch, brass foot, two rim mounted casting controls, faceplate cracked and distorted, a Hardy Eddystone 6" sea centre pin reel, worn finish and an Allcock Bell 6" sea centre pin reel (3)

£100-150

500

A Hardy Fortuna 7" big game sea centre pin reel, twin reverse tapered ebonite handles on brass cross-bar arm mounted above a six point capstan star drag, brass block foot, Andreas patent anti-reverse mechanism, fixed check, some wear to enamel finish from saltwater exposure, 1940's

£350-550

501

A scarce Hardy Brass Faced Perfect 3 1/8" trout fly reel, domed ivory handle, brass foot, strapped rim tension screw and early calliper spring check mechanism, contracted drum with four rim cusps and milled nickel silver locking screw, faceplate stamped Rod in Hand trademark, open oval and straight line logos, wear from normal use, circa 1898 (see illustration)
£800-1200



502

An important collection of fishing tackle and ephemera, formerly the property of the late German pioneer rod builder Bruno Kurth, including a scarce Hardy LRH Lightweight silent check trout fly reel, a Bruno Kurth hand built 2 piece cane brook trout fly rod, 6' 10", #4, black silk wraps, sliding alloy reel fitting, in bag, a "Lyle Dickerson" 3 piece (2 tips) cane brook trout rod, "The Ceirog", 7'6", #5, dated 1948, a letter (in German) from Kurth to fellow collector Jurgen Preylowski states this rod was an original Lyle Dickerson 761510 and was gifted to him by an American friend he met whilst a prisoner of war in Wales, however, we have had the rod inspected by Edward Barder who is of the firm opinion that this example is much more likely to be a blank built to a Dickerson taper, rather than an actual Lyle Dickerson example, Kurth notes he made a number of alterations and modifications to the rod and named it "Ceirog" after the river he fished with the American, the rod is in original bag and brass capped alloy tube, also included in the collection are an extensive collection of mainly trout dry flies, many tied by well-known tyer's and including four Wheatley alloy boxes in two fitted green canvas carry pouches, a Hardy brass thermometer, a Halden & Co. pocket barometer and case, Kurth's Ralph

Lauren Fishing Club baseball cap, a miniature cane rod and reel, a framed portrait print of Kurth and an extensive collection of various photographs, slides, transparencies and related ephemera including hand written and typed letters, pamphlets et al, a unique opportunity to secure a collection of personal artifacts of the rod builder who was influential in raising the art of cane rod building in Germany in the latter part of the 20th Century
£1300-1800

503

A good S.E. Bogdan Small Trout 3wt. fly reel, right handle wind model with black/champagne anodised finish, counter-balanced "S" scroll handle, perforated face and front drum plate, pierced foot, fixed click check mechanism, milled rear spindle cap and applied rectangular makers plaque, light sign of use only and in suede pouch (see illustration)
£1800-2600



504

A Hardy Filey 4 1/2" sea centre pin reel, solid alloy drum (no perforations), twin reverse tapered ebonite handles and milled brass spindle mounted tension nut, phosphor bronze bearings, brass stancheon foot, stamped makers details, good overall condition, circa 1930
£300-400

505

A fine and rare Hardy Perfect 3 1/4" Diamond Jubilee commemorative limited edition trout fly reel, a pre-production, un-numbered model in bright alloy finish, ivory handle, brass foot, fitted with a non-production rare green agate line guide (no cracks), brass strapped rim tension screw and 1912 style

check mechanism, drum with milled nickel silver locking screw, faceplate stamped Rod in Hand trademark, central circular logo and Royal Cypher with commemorative details to outer edge, new/unused condition and in original tan zip case (see illustration)
£800-1200



506
A fine Hardy Bouglé 3 1/4" 1903-2013 commemorative limited edition trout fly reel, a pre-production, un-numbered model in bright alloy finish, ivory handle, brass foot triple raised drum pillars (one nickel silver roller), brass strapped rim tension screw and 1912 style check mechanism, multi-perforated drum face, milled nickel silver locking screw, faceplate stamped red heightened Rod in Hand trademark, central circular logo and commemorative details to outer edge, new/unused condition (see illustration)
£500-800



507
A scarce Hardy Perfect 3 1/8" trout fly reel, domed ivory handle, pierced alloy foot, strapped rim tension screw and early calliper spring check mechanism, contracted drum with four rim cusps and milled nickel silver locking screw, faceplate stamped Rod in

Hand trademark and straight line logo, some light line grooving to inner drum rim otherwise wear from normal use only, circa 1898
£350-550

508
A rare Hardy USA 2 5/8" trout fly reel, ivory handle, brass foot, nickel silver horseshoe drum latch and patent "Radio" silent variable pressure brake mechanism, backplate stamped Uniqua model and makers details, a rarely seen model in the smallest available size and made 1922-23 only (see illustration)
£500-800



509
A Hardy "J.J.H. Triumph" 2 piece cane trout fly rod, 8'9", #6, crimson/scarlet tipped silk wraps, sliding alloy reel fitting, suction joint, 1986, in bag
£140-180

510
A Hardy "Smuggler" 4 piece glass fibre trout fly rod, 8', #6, gold/black tipped whippings, sliding alloy reel fitting, spigot joints, in bag
£120-160

511
A Hardy Marquis No.2 salmon fly reel and spare spool, composition handle, ribbed brass foot, two screw latch, rear check adjuster, in zip cases, a Hardy Zenith Lightweight trout fly reel, in original card box and a Hardy Princess and spare spool, in zip case and card box (3)
£150-250

512

A collection of various tackle including an Abu Cardinal 755 fixed spool reel, boxed, an Allcock Felton Crosswind fixed spool reel, boxed, a Veniard's trout/sea trout fly tying outfit, various reels, fly boxes, a Wychwood trout bag, two folding landing nets and ten various, older model, fly and spinning rods by Hardy, Bruce & Walker et al (Q)

£130-180

513

A scarce Greg's "Perfect" Salmon Line No.2 japanned tin box, oval case with hinged cover, turn-key hasp latch, gilt painted line details, interior lacking central fly holder, 6" wide, circa 1890 (see illustration)

£300-400



514

A Hardy Nottingham 1912 pattern 4" centre pin reel, walnut drum with twin horn handles, nickel silver milled spindle tension nut, lacking locking screw, Bickerdyke line guide, rim mounted optional check lever, brass starback foot stamped makers details, circa 1915

£140-240

515

A rare J.W. Martin & Son "Trent Otter" 4" Nottingham centre pin reel, solid walnut drum with twin domed horn handles on shaped brass plates, knurled brass spindle tension nut, face stamped makers details, Bickerdyke line guide, brass starback foot with sliding optional check button and calliper spring check mechanism, a rarely seen named model, circa 1900

£200-300

516

A scarce Geens Naturalspin 3" brass bait, the curved fish shaped lure with incised and painted decoration, patent removable double hook with clip fitting, barrel head swivel, circa 1900 and an Allcock Clipper 1 3/4" bait, fish shaped split tailed lure with twin black spot amber glass eyes, nickel silver revolving spindle, no hook, circa 1880 (2) (see illustration)

£200-300



517

A tan hide Gladstone style leather tackle case interior with cantilevered tackle trays and holding a good selection of various baits, flights and mounts including Phantom silk minnows, Colorado spoons, Devons by Hardy's, Browns, Allcock's et al, some in original boxes and various other items of tackle including a hand held tying vice, bone disgorging and other items, mostly dating c.1900-1930 (Q)

£200-300

518

A Hardy St George 3 3/8" trout fly reel and block leather case, shallow cored drum with ebonite handle and three screw spring latch, ribbed brass foot, white agate line guide (no cracks), milled rim tension screw and Mk.II check mechanism, wear from normal use, 1930's

£180-280

519

A Hardy Perfect 2 7/8" trout fly reel, ebonite handle, ribbed brass foot, milled rim tension screw and Mk.II check mechanism, light wear from normal use, in Selvyt reel pouch, 1940's

£200-300

520

A scarce G. Little whalebone framed landing net, the folding racquet shaped 16" wide head with spring locking knuckle joint and brass mounts, one engraved makers details, original cable laid net, on brass mounted wooden handle, circa 1890

£130-180

521

A Hardy Neroda No.2 bakelite trout fly box, oxblood finish, interior fitted nickel silver plates and 119 spring fly clips, a Wheatley salmon fly box holding a selection of fully dressed salmon flies, including small examples in Hardy packets and two further Wheatley alloy trout fly boxes (4)

£130-180

522

A Silver Pearl of the Dee limited edition brooch, commissioned by The Salmon & Trout Association and the Princes Trust, to commemorate the Queen Mothers 100th Birthday, designed and made by Rachel Jeffrey in silver with gold elements and set with rubies, sapphires and emeralds, the design was based on the hand tied salmon fly created by David Fynsong that accompanies this brooch, in original card box and with certificate of authenticity, limited edition no.08/100 (see illustration)

£200-300



523

An Abel folding pocket knife, single folding stainless steel blade, blue/green anodised abstract patterned ventilated side plates, spring belt clip, two similar knives by CRKT and four further pocket/sheath knives (7)

£240-340

524

A Hardy Silex 4" bait casting reel, caged drum with twin ivory handles, jewelled spindle bearing and spring release latch, cut away rim section, brass bridge foot, rim mounted casting trigger, tension regulator screw and optional check disc, light wear to finish, circa 1905

£130-180

525

A good Charlton 8450c Configurable trout/saltwater fly reel and spare spool, black anodised, left hand wind model, multi-perforated drum with counter-balanced rosewood handle, push button spindle release, block foot and rear star tension adjusting wheel, #5/6 shallow core and #7/8 narrow spindled spare spool, only light use (see illustration)

£600-900



526

A good Thomas & Thomas "ESP" 4 piece carbon trout fly rod, 8', #3, crimson silk wraps, wooden reel seat with screw grip alloy fitting, snake rings, only very light use, in bag and alloy tube

£160-260

527

A Hardy Golden Prince 9/10 salmon fly reel, brown/gold anodised finish, composition handle, spring drum latch, ribbed brass foot, rear spindle mounted tension wheel, light use only and a Thomas & Thomas "TNT" 4 piece fly rod, 9', #10, crimson whippings, alloy screw grip reel fitting, in bag (2)

£150-250

528

A Hardy brass and ebonite 4" salmon fly reel, domed ivory handle, bridge foot, twin German silver rims, quadruple drum pillars, fixed check mechanism, faceplate with raised two screw spindle boss and stamped Rod in Hand trade mark and enclosed oval logo, used condition, circa 1895 and in Farlow black leather case, strap a.f.

£140-240

.....

529

A good Thomas & Thomas "PA 804" 2 piece carbon trout fly rod, 8', #4, blue silk wraps, wooden reel seat with alloy screw grip reel fitting, inscribed previous owners details "Troutgirl - Molly Richens", little used condition, in bag and alloy tube

£160-260

.....

530

A good Hardy Brass Faced Perfect Houghton Dry Fly 2 5/8" wide drummed trout fly reel, domed ivory handle, brass foot, strapped rim tension screw and early calliper spring check mechanism, slightly dished drum with four rim cusps and milled nickel silver locking screw, faceplate stamped Rod in Hand trademark enclosed oval and straight line logos, reel retains almost all the original bronze patina and lead finish, circa 1900 (see illustration)

£700-1000



531

A Hardy Perfect 4 1/4" salmon fly reel, domed ivory handle, bridge foot, strapped rim tension screw with Turk's head locking nut and late 1906 calliper spring check mechanism, nickel silver line guide, triple cage pillars (two brass), drum with later nickel silver locking nut, faceplate stamped central circular logo, very fine hairline rim crack beside line guide, bright finish, used condition, circa 1910

£250-450

.....

532

A Hardy Brass Faced Perfect 4 1/4" salmon fly reel, ivory handle, pierced brass foot, neatly reduced at both ends, strapped rim tension screw with Turk's head locking nut and early calliper spring check mechanism, slightly dished solid drum (no perforations) with milled nickel silver locking screw, faceplate stamped open oval and straight line logos, light wear from normal use, circa 1904

£400-600

.....

533

A scarce Hardy Field 3 3/8" trout fly reel, lipped faceplate with domed ivory handle, brass bridge foot (neatly reduced), contracted brass drum with narrow arbour, triple brass drum pillars, fixed check mechanism, faceplate with raised two screw spindle boss and stamped model name, backplate stamped makers details, wear from normal use, circa 1896 (see illustration)

£450-650



534

A Hardy Perfect 3 3/8" trout fly reel, ivory handle, factory replaced rivetted brass foot, strapped rim tension screw and early calliper spring check mechanism, contracted drum with four rim cusps and milled nickel silver locking screw, faceplate stamped Rod in Hand trademark, enclosed oval and straight line logos, light wear to finish from normal use, circa 1898

£350-550

.....

535

A rare Hardy 1891 Brass Perfect 4 1/4" salmon fly reel and black leather case, domed cow horn handle, stanchion foot pierced three holes and numbered "20", one third nickel silver line wire guide mounted on two raised rim lugs, strapped rim tension screw and early calliper spring check mechanism, dished drum with hollow threaded core, ventilated arbour and two bands of large and small perforations, open ball race with steel bearings, faceplate stamped central 612 patent details, Rod in Hand trademark and enclosed oval logo, wear to bronze patina from normal use only, circa 1891 (see illustration)

£4500-6500



.....

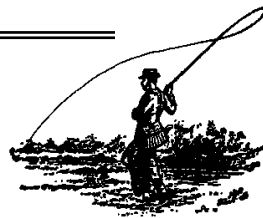
***** End of Sale *****

NOTES



BIDDING SLIP

Angling Auctions
30 Basepoint, Premier Way
Abbey Park, Romsey
Hants, SO51 9AQ



PLEASE PRINT CLEARLY

Name:

Address:

.....

.....

Telephone: Mobile:

Email:

Lot No	Description	Bid £
.....
.....
.....
.....
.....
.....
.....
.....
.....
.....

I have read and understood the Terms and Conditions of Sale

Signed: _____ Date: _____

COMMISSION BIDS – TERMS AND CONDITIONS

1.
Commission bids will be executed as cheaply as any other bids or reserves allow, and are carried out free of charge.
2.
All bids shall be treated as offers made on the Notice and Conditions of Sale printed in the catalogue.
3.
A maximum bid (exc. Premium and V.A.T.) should be indicated over “Buy” or unlimited bids will not be accepted.
4.
In the event of identical bids, the earliest will take precedence.
5.
Commission bids left by telephone should be confirmed by email or in writing.
6.
All commission bids are left entirely at the Buyer’s risk, and neither the Auctioneers, their agents or staff will be responsible for any errors in the execution of bids howsoever caused.
7.
Successful commission bidders will receive an invoice detailing purchases, and giving instructions for payment and collection of goods.

(Continued from inside front cover)

2. Payment

- (a) The Auctioneers shall pay the Proceeds of Sale to the Vendor seven days after the date of sale if the Auctioneer has been paid the Purchase Price in full by the Buyer.
- (b) If by due date the Auctioneers have not received payment in full from the Buyer the Proceeds of Sale will be paid seven days after full payment is received by the Auctioneer.
- (c) In the event of a defaulting buyer the Auctioneer reserves the right to cancel the sale on any lot(s) purchase and to return title of goods to the vendor.

3. Warranty & Indemnity

- (a) The Vendor warrants to the Auctioneer and to the Buyer that he is and will be able to transfer good and marketable title to the lot free from all liens and encumbrances.
- (b) The Vendor shall indemnify the Auctioneers, agents and the Buyer against all claims made or proceedings brought by persons entitled or purporting to be entitled to the Lot and shall reimburse the Auctioneers on demand for all payments, expenses, costs or any other loss or damage whatsoever made, incurred or suffered as a result of any breach by the Vendor of (a) above.

4. Insurance

No insurance charge is made. Insurance of all Lots will be the responsibility of the Vendor and the Auctioneer will not be liable for any loss or damage howsoever caused.

5. Vendor's V.A.T. Status

The Vendor shall give the Auctioneer all relevant information as to his VAT status with regard to the Lot(s) to be sold which he warrants is and will be correct and upon which the Auctioneer shall be entitled to rely.

6. Photography

The Auctioneers reserve the right to photograph any item(s) for reproduction in catalogues or for publicity purposes. There is a maximum charge of £30.00 for black and white and £150.00 for colour photographs (together with any VAT chargeable thereon).

7. General

The Auctioneer shall have absolute discretion as to the following:-

- (a) Whether to offer any Lot for sale or not
- (b) The description of any Lot in the catalogue
- (c) The printed estimated price of any Lot in the catalogue.

In these Conditions of sale the following words and expressions shall have the following meaning:-

"The Auctioneers"	Angling Auctions
"Hammer Price"	the price at which the Lot is Knocked down to the Buyer.
"Lot"	any item deposited with Angling Auctions with a view to sale at auction, in particular, the item or items described against any lot number in the catalogue
"Proceeds of Sale"	the net amount due to the Vendor being the Hammer Price less commission and any other charges due as published in the above Conditions of Sale
"Purchase Price"	the Hammer Price plus any premium. VAT chargeable and expenses due from a defaulting Buyer under condition A6 (b)
"Unsold Lot"	those Lots which fail to reach their reserve or attract a bidder

